

Press-Down-Probe, Modell 830 (Part-No.: 7220.830.SET)

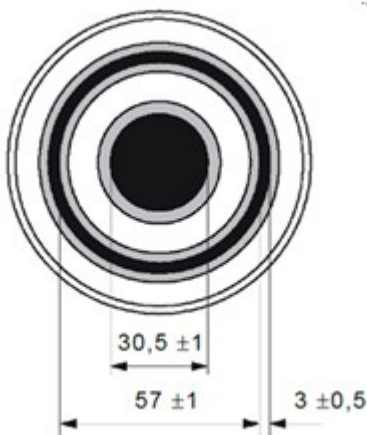
- Very light weight and universal probe for resistance to ground measurements, surface resistance and volume resistance measurement.
- Conductive contact rubbers with silver particles ($R < 5 \text{ Ohm}$)
- Circular - and concentric ring probe as magnetic interchangeable probes
- Circular probe complies with IEC 61340-2-3 and IEC 61340-4-1 for resistant to ground measurements
- Concentric ring probe complies with IEC 61340-2-3 for surface resistance and volume resistance measurements on packaging
- Hardness of the contact rubbers: 65 Shore A
- The standard weight of 2.5 kg is reached by pressing down the spring loaded mechanism



Concentric ring probe
Ø: 94 mm
H: 98 mm
0,7 kg



Circular ring probe Ø 63,5 mm
Ø: 79 mm
H: 83 mm
0,7 kg



dimensions with
DIN EN 61340-2-3



Made in Germany

Delivery range:

- Press-Down-Probe Model 830
- Stainless steel plate
- Insulating plate
- Conductive carrying case with conductive foam
- Calibration certificate (German / English)

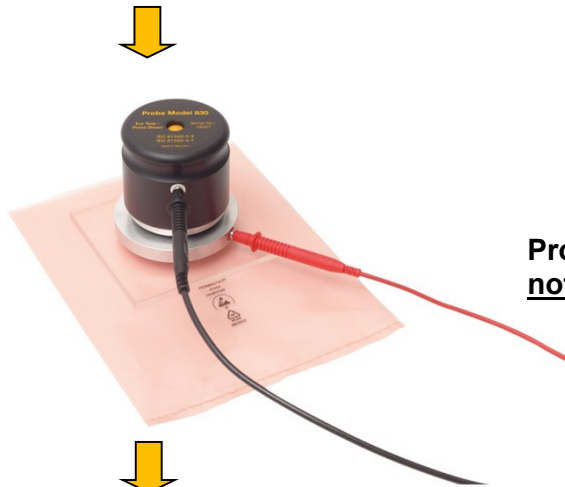
- ▶ 1 year limited warranty
- ▶ Recommended frequency of calibration: 1 Year

Application example:

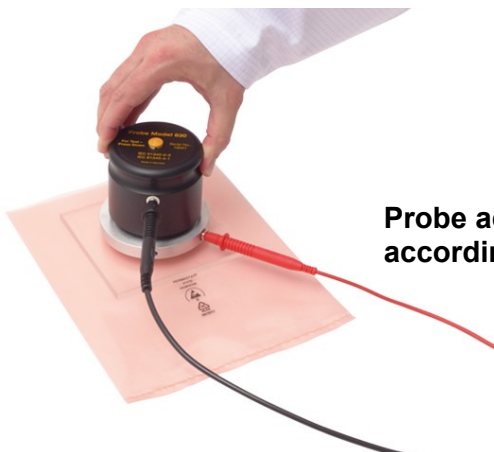
Measurement surface resistance R_s
with concentric ring probe



Inserting of
probe version



Probe
not active



Probe active with weight
according to specification

Measurement resistance to
groundable point R_{gp}
with circular probe Ø 63,5 mm

