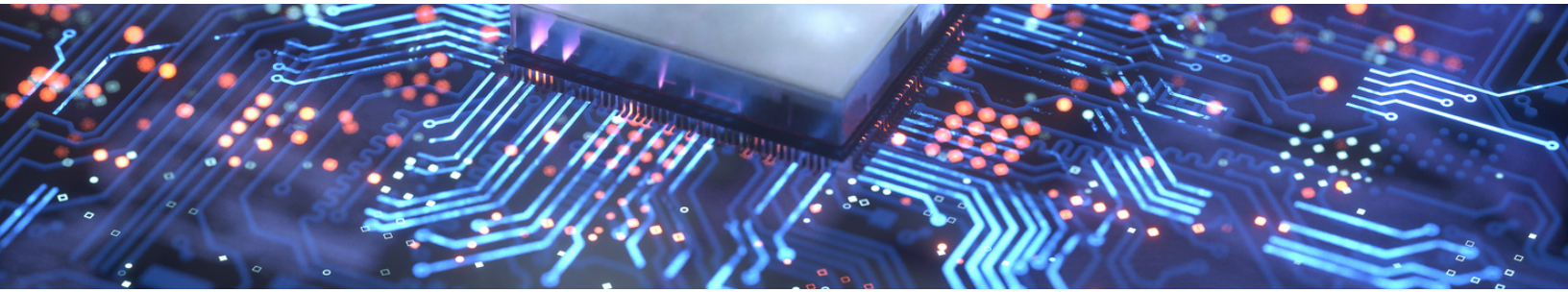


CONTAMINATION CONTROL for shoes & wheels

Electronics & Semiconductor



Dycem protects cleanrooms & critical environments within the global **Electronics & Semiconductor** industry.

Our polymeric contamination control mats are proven to attract and retain up to **99.9% of floor level** and up to **75% of airborne particulates**. When installed at pedestrian and wheeled entrances to a controlled space or clean room, the risk of potentially harmful contaminants like dust and ESD entering your critical environment is prevented. Protecting your work, your products, and your people is our top priority!

The Dycem Difference

Improved Contamination Control



SUPERIOR PERFORMANCE in attracting, collecting, and retaining particles



CUSTOMIZED SOLUTIONS tailored to meet the needs of each facility and provide optimal results



ESD PREVENTION through static dissipative properties



EASY CLEANING routine incorporated into existing SOP's with minimal downtime



EFFICIENCY by requiring no extra training, processes, or additional time for use



SUSTAINABILITY and significant reduction in waste over a 3+ year lifespan



QUALITY & COMPLIANCE commitment by meeting industry and international standards



prevent

ESD

dissipates static
@ 10⁸ ohm

“Since replacing peel-off mats we have seen a noticeable improvement in static charge within the labs and surrounding areas... a much more effective method of prevention.”

-Infineon



→ OUR PRODUCTS FOR YOUR INDUSTRY



For pedestrian shoes & light wheeled traffic



Color options



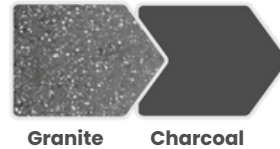
Cobalt Titanium Midnight Slate Green Red



For wheels of heavy carts, pallet jacks, & forklift traffic



Color options



Granite Charcoal

“—

“We invested in Dycem some five years ago to protect our critical environments i.e. cleanrooms and camera assembly...we have now built new cleanrooms and improved the cleanliness of our controlled areas. The improvement in those areas is very much down to the Dycem product.”

-Sony

SONY

→ WHERE TO USE

- ☒ ESD sensitive zones
- ☒ Cleanroom entrances
- ☒ Pedestrian gowning and airshowers
- ☒ Pedestrian & material airlocks
- ☒ Equipment entrance & transfer areas
- ☒ Material & product transfer areas
- ☒ Assembly & Packaging areas



→ Contact us for a FREE sample & site survey!

