



Wipes for Critical Environments

Mission-critical cleaning and contamination control

Contec® is a leading manufacturer of contamination control products for critical cleaning in manufacturing environments worldwide. Contec's cleanroom wipes, mops and disinfectants are used in various industries across the globe including biotechnology, pharmaceutical, semiconductor, healthcare, microelectronics and other critical applications.

Experienced

With over 30 years experience, we understand the unique cleaning and contamination control requirements of these highly regulated markets. Our sales and technical support teams are fully trained to assist customers in finding or creating a Contec product that best meets their needs. With experienced, long-established sales representatives all over the world, our customers benefit from personalized service and fast, efficient sample and order turnaround.

Global

Contec owns and operates manufacturing facilities in Spartanburg, South Carolina; Ashington, UK; and Suzhou, China. Contec has distribution centers in Toledo, Ohio, and Vannes, France. All manufacturing facilities are ISO 9001:2015 certified. Contec has operational, sales, and technical service teams in North America, Europe, and Asia. These facilities and dedicated team members give Contec the ability to provide product and technical support to multinational customers with global needs.

Committed to quality

We recognize our customers as the center of our organizational structure. Our employees are committed to meeting each customer's specifications and exceeding each customer's expectations. We will achieve this through the periodic review and continuous improvement of all processes in our management system.

All manufacturing sites are currently certified to ISO 9001:2015, which ensures customers of consistent quality products - from development to delivery. As a vertically integrated manufacturer, Contec controls more of the manufacturing process than any other supplier. We invite you to come and visit our manufacturing facilities and find out for yourselves.

Committed to customers

Let us help solve your cleaning challenges. Product samples, demonstrations and trials are always offered free-of-charge. We have regional technical specialists working with our professional sales staff who will come to your location and recommend the best product and practices for your needs. If necessary we can develop unique custom solutions to your problems.

Contec Cleanroom Wipes

A wide range of dry and presaturated, knitted and nonwoven wipes specifically designed for cleanroom applications

With 30 years of experience in the processing of knitted wipes, Contec has developed the most complete range of wipes and mopping products for the life science industry. Contec offers an extensive line of cleanroom wipes designed to meet the requirements of some of the most critical environments in the world. Contec offer many different wipe substrates, edge technologies, configurations, and processing options for both sterile and nonsterile, dry and presaturated, knitted, nonwoven wipes and microfiber wipes.

In 1992, Contec pioneered the use of presaturated wipes for industrial use. Over 30 years of industry-leading innovation has led to one of the widest ranges of presaturated wipes for cleanroom applications. Recent innovations in the range include wipes with guaranteed low endotoxin levels and wipes made from recycled plastic bottles.

Contents

- Guide to efficient wiping 4
- Choosing a cleanroom wipe 6
- Contec Knitted Polyester Wipes 8
- Contec Recycled Polyester Wipes 15
- Contec Microfiber Wipes 16
- Contec Nonwoven Wipes..... 20
- Contec Specialty Wipes 28
- Contec Presaturated Wipes..... 30
- Contec Knitted Polyester Presaturated Wipes 32
- Contec Nonwoven Presaturated Wipes 34
- Contec Microfiber Presaturated Wipes 41
- Wipes Comparison Guides..... 42



Guide to efficient wiping

Cleanrooms and other controlled environments require stringent control of particles, residues and microorganisms to ensure the desired product or process outcome. The control of these critical parameters is very often achieved by the use of wipes, either dry or presaturated. Studies have shown that wiping is the most effective method of cleanroom cleaning.¹ Presaturated wipes in particular, are highly suitable for capturing and removing particles and dirt, disturbing biofilms and removing residues.

Wipes are especially good, not only at picking up dirt and particles, but retaining them and allowing the dirt and particles to be physically removed from the cleanroom. The ability of a wipe to retain and remove a particle or fiber depends on the structure of the wipe and the size of the contaminant. Wetting the wipe significantly enhances particle entrapment and removal. In addition, Contec has developed innovative surface treatments for dry wipes in order to enhance particle removal and retention.

A single facility may need a number of different wipe substrates, sizes and formats to cover all the requirements of the different processes and room grades within the facility. Contec has developed the widest selection of knitted wipes using a variety of fabric types, edge technology and processing options. By adapting these options to meet different cleaning and wiping needs, Contec has engineered a family of pharmaceutical wipes which can be confidently used from Grade A product contact areas through to unclassified support rooms.

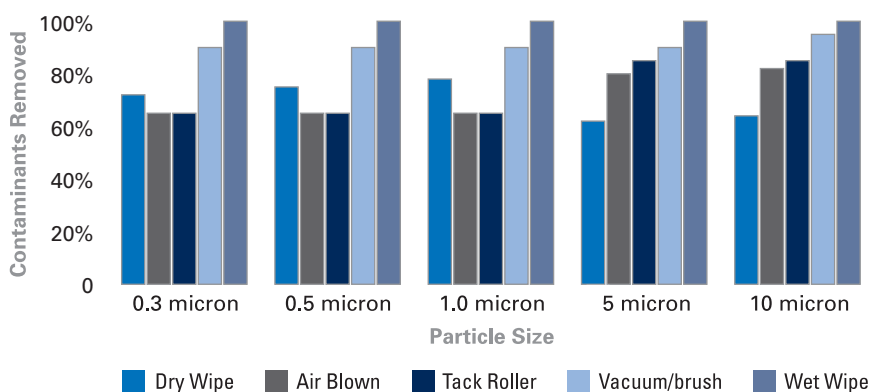
"presaturated
wipes especially,
are highly suitable
for capturing and
removing particles
and dirt..."

Dry or presaturated?

Various studies have shown that wiping with saturated wipes is a very effective way to control contamination on a hard surface.¹ Studies of particle adhesion to surfaces have shown that the predominant force binding particles to a surface is a capillary force.² The use of a wipe presaturated with a low surface tension fluid such as alcohol helps to lower the surface tension of this binding force facilitating the removal of the particle. Wetting a wipe further enhances its ability to trap particles. Using a wetted wipe provides an overpowering bias for the particles to remain with the wipe so once the wipe is removed from the environment, the particles go with it, resulting in the most effective method for removing particles from a cleanroom surface. Presaturated wipes offer many other benefits; including increased solvent control especially key in areas with expensive equipment, significantly reduced VOC emissions, increased convenience, increased consistency and repeatability whilst lowering validation time.

The benefits when used for disinfection could be even more significant according to a study which compared the spread of microbial contamination on surfaces cleaned with dry wipes sprayed with alcohol to those cleaned with presaturated wipes.³

Cleaning Effectiveness Method Comparison¹



How to wipe

For the wiping process to be successful the wipe must come into intimate contact with the unwanted contaminants and the process must be consistent and repeatable. There are many areas in a cleanroom where consideration needs to be given to whether the particles are being shielded, Fig 1. Difficult to clean areas should always be cleaned first with particular attention to areas where particles may be difficult to reach.

Technique is also important to prevent the captured contamination being redeposited on a surface. Some general best practice rules include:-

- Fold the wipe to ensure that even pressure can be applied across the wipe. It also means that a clean side of the wipe can be presented to the surface on every stroke ensuring no contaminants are redeposited on the surface. Fold the wipe in half and then in half again, this produces up to 8 clean sides to be used. Fig 2.
- Pick up the quarter folded wipe at the open edges. Grasp the unfolded edges between the thumb and forefinger. When wiping, place equal pressure across the edge of the hand, holding the fingers together and pull across the surface to be cleaned ensuring that the open edges are lifted away from the surface. Angling the hand slightly allows the folded edge of the wipe to remain in consistent contact with the surface.
- Use pull and lift technique technique, shown in Figure 3. Lifting the wipe at the end of every stroke ensures that any contamination is removed from the surface.
- At the end of every stroke, either flip or refold the wipe, exposing a clean surface. A general rule is that the wipe surface needs to be changed every 10 wipe lengths.
- It is important to ensure that no area is missed. To facilitate this, wiping in straight lines with overlapping strokes will mean that every centimeter is covered. To prevent a miniscule gap between the strokes, each stroke should overlap the previous by 10 – 25%. Wiping should never be carried out in a circular motion as this causes the wipe in its dirtiest state to be passed over an area which has just been cleaned.
- Wiping should be carried out from the cleanest area to the dirtiest, most critical to least critical. This will usually be from top to bottom, from back to front, from driest to wettest.

"...our results clearly demonstrated, in a quantitative manner, that alcohol pre-impregnated wipes are more effective at reducing surface bioburden than dry wipes sprayed with alcohol.³"

Fig 1

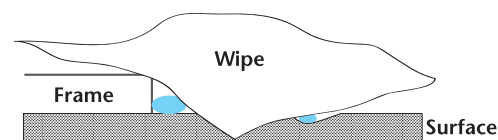


Fig 2

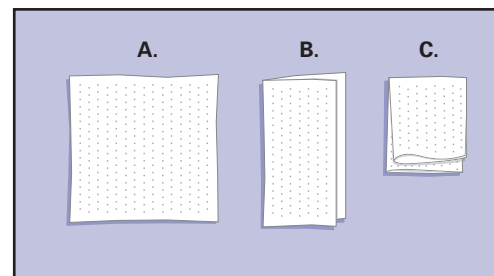


Fig 3

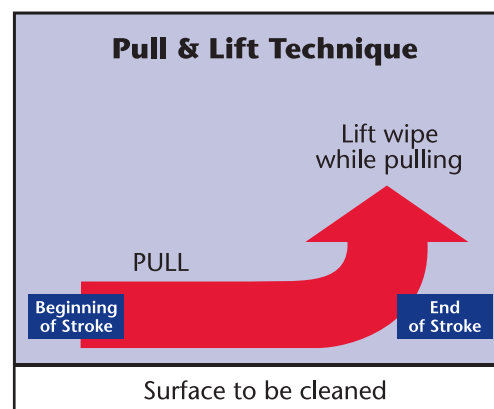
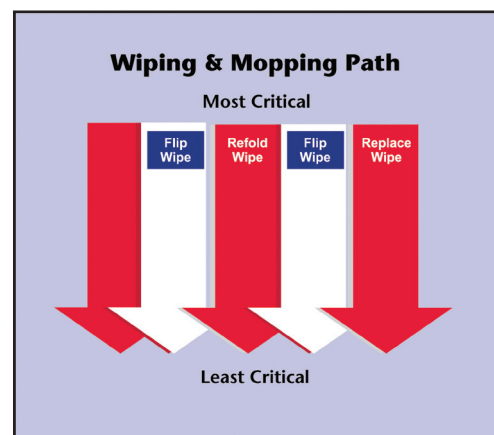


Fig 4



(1) Cleaning Effectiveness Method Comparison: Contec Presentation 1996: D Nobile

(2) Wiping Surfaces Clean: Vicon Publishing 2004: H Siegerman Ph.D

(3) Evaluation of alcohol wipes used during aseptic manufacturing: The Society for Applied Microbiology, Letters in Applied Microbiology 48 648-651: M.N. Panousi, G.J. Williams, S. Girdlestone, S.J. Hiom and J.-Y. Maillard (2009)

"Contec has a range of substrates, knitted or nonwoven, different edge types, different basis weights, to suit all applications and budgets within a cleanroom..."

Choosing a cleanroom wipe

Contec offers an extensive line of cleanroom wipes in many different wipe substrates, edge technologies, configurations, and processing options for both sterile and nonsterile, dry and presaturated, knitted, nonwoven wipes and microfiber wipes.

Wipes Characteristics

The characteristics of individual wipes affect their performance. Very often a compromise needs to be made between the different attributes. The decision of which wipe to choose for a particular application should be risk based, dependant on the relative impact on a product or process.

Care should be taken when comparing results, as comparing technical data from different sources is an inexact science due to the variability between different test methods and different testing equipment. The test methods for particles and fibers often vary considerably and the results even more so.

Cleanliness: Every wipe will contain some contaminants, so it is important to minimize the deposition onto critical surfaces during wiping. Laundered, sealed edge, synthetic wipes are the cleanest available option; however, they are also less sorbent and more expensive than wipes made of natural fibers. Test results are usually declared for particles and fibers, fibers generally referring to individual "long" particles over 100µm.

Sorbent properties: The ability of the substrate to absorb liquids. Sorbent properties are critical for the removal of liquids, especially when wiping to dry. Test results are usually available for the intrinsic and extrinsic sorbency and the rate of sorption. Intrinsic sorbency is usually reflected as ml/g and extrinsic sorbency as ml/m².

Wipes containing natural fibers have better sorbent properties, however they tend to release higher levels of particulates and fibers. In general, synthetic wipes (polyester and polypropylene) tend to become more sorbent as the filament size is reduced, with microfiber products being the most sorbent option. Polyester wipes can be treated during the finishing process to improve their sorbency.

Weight: Often expressed as g/m², this variable has an effect on sorbent capacity and cost.

Chemical compatibility: Pure synthetics such as polyester nonwovens and knitted fabrics offer the greatest range of chemical compatibility, while those containing cellulose are susceptible to degradation by moderately caustic solutions and are not suitable for use with all disinfectants.

Metallic and other ions: Semiconductor and data storage industries are very concerned about ion contamination from a wipe. For the most sensitive industries wipes with individual ion levels below 1ppm are utilized.

Wipe Classification

Wipes are very often grouped by substrate and their manufacturing process as these all have an effect on the characteristics above.

Material used: Synthetic, natural, or blended fibers. Generally synthetic materials have longer fibers that are cleaner than natural fibers.

How the wipe is constructed: Knitted, nonwoven (hydroentangled, meltblown, chemically bonded) or woven.

How is it converted into wipes: Knife-cut, or cut and sealed edges. Sealed edges reduce the release of particles and fibers.

Whether it has been treated or laundered: Laundering reduces all key contamination criteria; sorption enhancers and particle attraction treatments can be added during finishing.



Pharmaceutical cleanroom wipes

Microbiological contamination is a critical concern for manufacturers of pharmaceutical, and medical device products. Annex 1 of cGMP states that "Disinfectants and detergents used in Grades A and B areas should be sterile prior to use." All cleaning products including wipes used in aseptic areas, are usually sterilized or provided sterile by the supplier to prevent compromising the cleanroom. This allows the manufacturer to focus on core activities.

Sterile Wipes

Sterility is the absence of living organisms. The Sterility Assurance Level (SAL) of a product is defined as the probability of any given unit being nonsterile after exposure to a validated sterilization process.

Contec's validated sterile wipes are sterilized by Cobalt-60 Gamma Radiation and validated to a Sterility Assurance Level (SAL) of 10^{-6} in accordance with standards and recommended practices of Association for the Advancement of Medical Instrumentation (AAMI) Guidelines. This means there is less than a one in one million probability that the product contains a viable microorganism.

Contec can offer both sterile knitted 100% polyester wipes and a range of nonwoven wipes. Each product is either double or triple packaged to ensure product integrity and uncompromised entry into the aseptic suite. Small packaging configurations in easy-to-open bags and pouches are used for sterile wipes, to help keep wipe waste to a minimum.

The label provides lot numbers and expiration dates for lot traceability. A validation package is available to support all sterile products. Each batch of sterile product comes with lot-specific Certificates of Conformance and Sterilization.



All Contec's validated sterile products are highlighted with the green 10^{-6} symbol.

Pyrogens and Endotoxins

A pyrogen is quite simply a fever producing substance, some of the most common types of pyrogens are bacterial endotoxins. These are derived from the outer cell membranes of gram-negative bacteria and are released upon breakdown of the cell wall or bacterial cell lysis. The terms endotoxin and pyrogen are often used interchangeably. Products containing pyrogens (endotoxins) can pose a life threatening risk to patients.

A sterile product is not necessarily pyrogen/endotoxin free. The process of sterilization only ensures the absence of viable living bacteria. If a product is manufactured with very low levels of initial bioburden in clean conditions it is possible to create products where only very small numbers of endotoxins are created during the sterilization process.

Endotoxins are measured in Endotoxin Units, usually expressed as EU/ml or EU/device. Contec can offer both dry and presaturated wipes with guaranteed low levels of endotoxin contamination. All of Contec's low endotoxin contamination control consumables are batch tested using the Limulus Amebocyte Lysate test for quantification of endotoxin levels.



All Contec's Low Endotoxin products are highlighted with the purple LE symbol. They are all validated sterile to 10^{-6} SAL.

"The use of low endotoxin products for cleaning and contamination control can help to minimize the risk of endotoxin contamination."

- **Manufactured from multifilament textured polyester yarn which is highly durable and tear resistant**
- **Knitted structure enhances particle entrapment and increases sorbency**
- **100% man-made fiber is extremely low in fibers and particles**
- **Knitted polyester wipes are soft and pliable with good biological cleanliness**

Contec Knitted Polyester Wipes

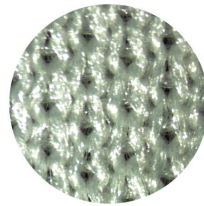
Laundered polyester knits are the cleanest category of wipes for critical environments. These wipes are made from multifilament textured polyester yarns that offer an excellent balance of sorbency and cleanliness. Through years of continuous improvement, Contec has created processes that minimize non-volatile residues (NVRs) and particles, yet result in a sorbent wipe with good functionality.

Contec has created the widest selection of knitted wipes using a variety of fabric types, edge technologies and processing options. By changing these parameters to meet different requirements, Contec has a range of products which meets the needs of many different customers.

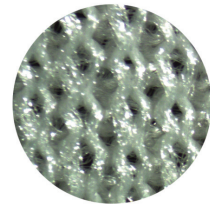
The wipes are available with soft knife-cut edges and cleaner laser-cut edges. The wipes are laundered and packed in an ISO Class 4 cleanroom and are provided double or triple packed in cleanroom compatible packaging. Each lot is labelled to provide traceability.

Types of knitted wipe

Wipes can be knitted in a variety of ways to improve the performance characteristics. All Contec's knitted wipes as a minimum have been created using an interlock knit which is a variation of a rib knit where any given stitch will reveal another knit stitch. This makes the wipe more durable and provides a slightly heavier basis weight.



Interlock



No-run interlock knit

Contec's knitted wipes are available in two different weights, standard weight approx 120g/m² and heavyweight, approx 140g/m². All Contec's heavier weight wipes, are created using a no-run interlock knit. This is similar to the interlock knit but a periodic extra stitch is added that does not allow the fabric to "run" or unravel if snagged. This makes the wipe very durable and suitable for use on a wide variety of surfaces.

Contec also has a range of microfiber wipes to choose from; 100% polyester standard fiber/microfiber blends, polyester/nylon blends and a unique microfiber/polypropylene option.

2-ply quilted polyester

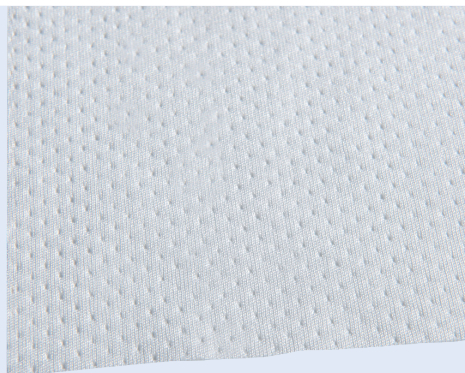
2-ply quilted polyester wipe in a laminated construction. The lamination of two layers of fabric allows the final product to have more than twice the sorbency of the two single ply layers. It is the most sorbent sealed edge wipe available.

100% knitted polyester with sealed edges

Knitted 100% textured polyester wipes with laser-cut sealed edges for very low levels of particles and fibers. Laser cutting seals the fibers at the edge of the wipe allowing 100% utilization of the wipe.

100% knitted polyester

Also knitted from 100% textured polyester filament, these wipes are knife-cut. A knife-cut edge provides a very soft edged wipe that is non abrasive.



- Recommended for ISO Class 3-8 environments
- 240g/m² 2-ply quilted polyester wipes for increased strength, durability and sorbency
- Laser-cut which seals fibers at wipes edge
- Extremely low levels of particles and fibers

Quiltec® I Wipes

2-ply quilted polyester with sealed edges

Product information

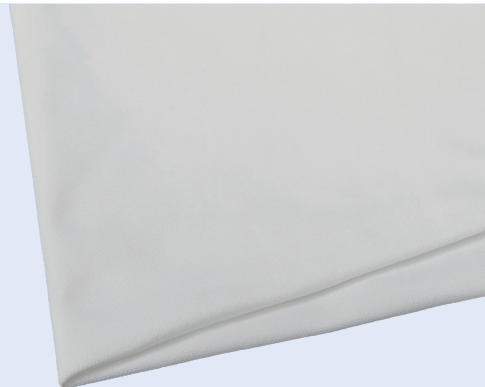
Quiltec® I Wipes are manufactured using two layers of knitted polyester fabric that are laminated together to form a stronger more sorbent wipe. Additional fluid is captured within the quilted pockets between the fabric layers making it twice as sorbent as a single ply polyester wipe.

Quiltec I has laser-cut, heat sealed edges which reduce the number of releasable particles and fibers. It is laundered and packed in an ISO Class 4 cleanroom. As a knitted polyester product, it is abrasion and chemical resistant and extremely low in particles and fibers.

Sterile Quiltec Wipes are also laundered and packed in an ISO Class 4 cleanroom before sterilization via gamma irradiation. All Contec's sterile dry wipes are validated to a SAL of 10⁻⁶ in accordance with standards and recommended practices of the AAMI/ISO 11137 Guidelines for the sterilization of medical devices.

Small packaging configurations in easy to open bags are ideal for sterile use and help keep wipe waste to a minimum. A certificate of sterility is provided with each shipment.

	Part No.	Size	Quantity
Quiltec I Wipes Flat stacked	QT1-99	9" x 9" (230 x 230mm)	50 wipes/bag; 20 bags/case
	QT1-1212	12" x 12" (300 x 300mm)	50 wipes/bag; 10 bags/case
	LWQT0019	18" x 18" (460 x 460mm)	25 wipes/bag; 8 bags/case
Quiltec I Wipes Bulk	QT1-66B	6" x 6" (150 x 150mm)	200 wipes/bag; 10 bags/case
	QT1-99B	9" x 9" (230 x 230mm)	150 wipes/bag; 6 bags/case
	QT1-1212B/100	12" x 12" (300 x 300mm)	100 wipes/bag; 5 bags/case
Sterile Quiltec I Wipes Flat stacked, double bagged 	LWQS0002	12" x 12" (300 x 300mm)	25 wipes/bag; 20 bags/case



- Recommended for ISO Class 3-8 environments
- Sealed edges to reduce particle and fiber generation
- High sorptive capacity and fast sorption rate for superior spill control processed for superior cleanliness and sorbency
- Manufactured from 100% continuous filament polyester and specially processed for superior cleanliness and sorbency

Anticon® Gold HeavyWeight™ Wipes

100% no-run interlock knit polyester with sealed edges and increased sorbency

Product information

Anticon® Gold HeavyWeight™ 140g/m² Wipes are made from 100% continuous filament polyester with a double-knit no-run interlock construction. Anticon Gold HeavyWeight uses patented textile technology to achieve superior sorption characteristics for critical applications.

The sealed edges reduce particle and fiber generation. Anticon Gold HeavyWeight wipes' low sub-micron particles and fiber counts are ideal for use in the most critical environments. The wipes are cleanroom laundered and packaged in an ISO Class 4 cleanroom and exhibit very low particle and fiber counts.

Anticon® Sterile Gold™ Wipes are a sterile version of Anticon Gold HeavyWeight wipes. These wipes are ideal for use in the most critical life science cleanrooms. They are ideal for disinfectant and solvent application and wiping to dry.

Conveniently packaged in easy tear bags containing only 20 wipes per bag to eliminate wastage. Anticon Sterile Gold is sterilized via gamma irradiation to a sterility assurance limit of 10⁻⁶ and a certificate of sterility is provided with each shipment.

	Part No.	Size	Quantity
Anticon Gold HeavyWeight Wipes Flat stacked	492224-789	9" x 9" (230 x 230mm)	150 wipes/bag; 8 bags/case
	492224-790	12" x 12" (300 x 300mm)	100 wipes/bag; 4 bags/case
	492224-783	15" x 18" (390 x 460mm)	75 wipes/bag; 8 bags/case
Anticon Gold HeavyWeight Wipes Bulk	492224-798	4" x 4" (100 x 100mm)	600 wipes/bag; 8 bags/case
Anticon Sterile Gold Wipes Flat stacked	492226-942	12" x 12" (300 x 300mm)	20 wipes/bag; 20 bags/case
Anticon Sterile Gold Wipes Flat stacked - triple bagged	492226-944	12" x 12" (300 x 300mm)	20 wipes/bag; 20 bags/case

Polynit Heatseal Wipes

100% no-run interlock knit polyester with sealed edges

Product information

Polynit Heatseal 140g/m² Wipes are made of 100% knitted textured polyester with laser-cut sealed edges for very low levels of particles and fibers. Polyester wipes are chemically resistant and exceptionally low in particles and extractable residues making them ideal for critical cleaning.

An interlock knit creates a durable fabric, the addition of a periodic additional stitch of a no-run interlock knit prevents the fabric unraveling creating an even more durable fabric with strong edges.

The wipes are laundered and packaged in an ISO Class 4 cleanroom. They have good sorbency with solvents and are abrasion and chemical resistant.

Sterile Polynit Heatseal Wipes are gamma irradiated and validated per AAMI guidelines to a 10⁻⁶ SAL so can be used in the highest grade life science cleanrooms.

Sterile Polynit Heatseal LE Wipes have a guaranteed endotoxin level of <1 EU/wipe and are validated sterile to 10⁻⁶ SAL, making them ideal for use in product contact areas.

The wipes are half folded and triple packaged in linear tear outer bags for ease of transfer into Grades A/B cleanrooms. This smaller packaging takes up less space making it ideal for mini environments. The small quantity of wipes per package can easily be used during one cleaning session, eliminating waste.

A certificate of sterility and endotoxin limit is provided with each shipment.

- Recommended for ISO Class 3-8 environments
- Low levels of particles and fibers
- 100% knitted polyester is abrasion and chemical resistant
- Laser-cut, sealed edge prevents release of fibers
- Low endotoxin version available with a guaranteed level of <1 EU/wipe

	Part No.	Size	Quantity
Polynit Heatseal Wipes Flat stacked	PNHS-99	9" x 9" (230 x 230mm)	75 wipes/bag; 16 bags/case
	LWPS0030	9" x 9" (230 x 230mm)	150 wipes/bag; 8 bags/case
	PNHS-1212	12" x 12" (300 x 300mm)	75 wipes/bag; 10 bags/case
Polynit Heatseal Wipes Bulk	PNHS-99B	9" x 9" (230 x 230mm)	300 wipes/bag; 4 bags/case
	PNHS-99B/150	9" x 9" (230 x 230mm)	150 wipes/bag; 8 bags/case
Sterile Polynit Heatseal Wipes Flat stacked	PN-99IR	9" x 9" (230 x 230mm)	10 wipes/bag; 100 bags/case
	LWPS0006	9" x 9" (230 x 230mm)	25 wipes/bag; 48 bags/case
	LWPS0007	12" x 12" (300 x 300mm)	25 wipes/bag; 40 bags/case
	LWPS1004	12" x 12" (300 x 300mm)	75 wipes/bag; 8 bags/case
Sterile Polynit Heatseal LE Wipes Half folded	LWLE0001	9" x 9" (230 x 230mm)	10 wipes/bag; 50 bags/case
	LWLE0002	12" x 12" (300 x 300mm)	10 wipes/bag; 36 bags/case



- Recommended for ISO Class 5-8 environments
- Knife-cut edges create a very soft wipe so the whole of the wipe fabric can be used with no risk of scratching
- Laundered and packed in an ISO Class 4 cleanroom

Anticon® 100 HeavyWeight™ Wipes

100% no-run interlock knit polyester with knife-cut edges

Product information

Contec's Anticon® 100 HeavyWeight™ 140g/m² Wipes are made from 100% continuous filament polyester with a double-knit no-run interlock construction. The clean cut edges create a very soft wipe, where the whole of the wipe fabric can be used with no risk of scratching. The wipes are laundered and packaged in an ISO Class 4 cleanroom and exhibit very low particle and fiber counts for a knife-cut wipe.

Using patented textile technology Anticon 100 HeavyWeight wipes achieve superior sorption capacity with a quick sorption rate.

Anticon® Sterile 100™ Wipes are also laundered and packed in an ISO Class 4 cleanroom before sterilization via gamma irradiation. All Contec's sterile dry wipes are validated to a SAL of 10⁻⁶.

	Part No.	Size	Quantity
Anticon 100 HeavyWeight Wipes Flat stacked	492222-813	9" x 9" (230 x 230mm)	75 wipes/bag; 16 bags/case
	492222-815	12" x 12" (300 x 300mm)	50 wipes/bag; 8 bags/case
Anticon Sterile 100 Wipes Flat stacked	492226-939	9" x 9" (230 x 230mm)	20 wipes/bag; 40 bags/case



- Recommended for ISO Class 5-8 environments
- Laundered knitted 100% polyester fabric for extremely low levels of particles and fibers
- Soft edge is ideal for use on surfaces which are vulnerable to scratching

Polynit Wipes

100% no-run interlock knit polyester with knife-cut edges

Product information

Polynit Wipes are made of 100% knitted textured polyester with knife-cut edges for a very soft wipe. The soft edge is ideal for use on surfaces which are vulnerable to scratching. Polyester wipes are chemically resistant and exceptionally low in particles and fibers. An interlock knit creates a durable fabric, the addition of a periodic additional stitch of a no-run interlock knit prevents the fabric unraveling creating an even more durable fabric with strong edges.

The wipes are laundered and packaged in an ISO Class 4 cleanroom. They have good sorbency with solvents and are abrasion and chemical resistant.

	Part No.	Size	Quantity
Polynit Wipes Flat stacked	PN-44	4" x 4" (100 x 100mm)	300 wipes/bag; 16 bags/case
	PN-99	9" x 9" (230 x 230mm)	75 wipes/bag; 16 bags/case
	PN-1212	12" x 12" (300 x 300mm)	75 wipes/bag; 10 bags/case
	PN-1818	18" x 18" (460 x 460mm)	50 wipes/bag; 6 bags/case

Anticon® Gold StandardWeight™ Wipes

100% interlock knit polyester with sealed edges

Product information

Anticon® Gold StandardWeight™ 120g/m² Wipes are made from 100% continuous filament polyester with a double-knit no-run interlock construction. The sealed edge reduces the amount of fibers released from the wipe. The wipes are cleanroom laundered and packaged in an ISO Class 4 cleanroom and generate very low levels of particles and fibers, helping to minimize contamination. These wipes are ideal for use in the most critical of cleanroom environments. The lighter basis weight provides superior value for general cleaning applications.

Using patented textile technology Anticon Gold StandardWeight wipes achieve superior sorption capacity with a quick sorption rate.

- Recommended for ISO Class 3-8 environments
- Sealed edges reduce particle and fiber generation
- Lighter basis weight provides superior value for general cleaning applications

	Part No.	Size	Quantity
Anticon Gold StandardWeight Wipes Flat stacked	495353-902	9" x 9" (230 x 230mm)	75 wipes/bag; 16 bags/case
	495353-904	12" x 12" (300 x 300mm)	50 wipes/bag; 8 bags/case
Anticon Gold StandardWeight Wipes Bulk	495353-903	9" x 9" (230 x 230mm)	75 wipes/bag; 16 bags/case
	495353-934	12" x 12" (300 x 300mm)	50 wipes/bag; 20 bags/case

Polywipe-C Heatseal Wipes

100% interlock knit standard weight polyester with sealed edges

Product information

Polywipe-C Heatseal 120g/m² Wipes are made from a 100% knitted polyester that is laser-cut to bond the fibers at the edges of the wipe.

The wipe is chemical resistant and exceptionally low in particles and extractable residue making it ideal for critical cleaning. The wipes are laundered and packed in an ISO Class 4 cleanroom.

Sterile Polywipe-C Heatseal Wipes are also laundered and packed in a Class 4 cleanroom before sterilization via gamma irradiation. All Contec's sterile dry wipes are validated to a SAL of 10⁻⁶.

- Recommended for ISO Class 3-8 environments
- Laser-cut, which seals fibers at wipe's edge
- Extremely low in both particles and extractableness

	Part No.	Size	Quantity
Polywipe-C Heatseal Wipes Flat stacked	PCHS-99	9" x 9" (230 x 230mm)	75 wipes/bag; 24 bags/case
	PCHS-1212	12" x 12" (300 x 300mm)	75 wipes/bag; 10 bags/case
Sterile Polywipe-C Heatseal Wipes Flat stacked	LWCS0033	9" x 9" (230 x 230mm)	150 wipes/bag; 10 bags/case



Sterile



- Recommended for ISO Class 5-8 environments
- Knife-cut edges create a very soft wipe so the whole of the wipe fabric can be used with no risk of scratching
- Patented textile technology creates a polyester wipe with high sorbency

Anticon® 100 StandardWeight™ Wipes

100% interlock knit polyester with knife-cut edges

Product information

Contec's Anticon® 100 StandardWeight™ Wipes are made from 100% continuous filament polyester with a double-knit no-run interlock construction. The clean cut edges create a very soft wipe, where the whole of the wipe fabric can be used with no risk of scratching.

The wipes are cleanroom laundered and packed in an ISO Class 4 cleanroom and exhibit very low particle and fiber counts for a knife-cut wipe helping to minimize contamination. Using patented textile technology Anticon 100 StandardWeight Wipes achieve high sorption capacity with a quick sorption rate. Ideal for spill control as well as applying disinfectants and cleaning solutions.

Anticon® 100 Wipes are the knife-cut equivalent of Anticon® Gold StandardWeight™ Wipes.

	Part No.	Size	Quantity
Anticon 100 StandardWeight Wipes Flat stacked	495352-803	9" x 9" (230 x 230mm)	75 wipes/bag; 16 bags/case
	495352-805	12" x 12" (300 x 300mm)	50 wipes/bag; 8 bags/case
Anticon 100 StandardWeight Wipes Bulk	495352-804	9" x 9" (230 x 230mm)	75 wipes/bag; 16 bags/case



- Recommended for ISO Class 5-8 environments
- Knife-cut edges create a very soft edged wipe
- Lighter basis weight provides superior value for general cleaning applications.

Polywipe-C Wipes

100% interlock knit standard weight polyester with knife-cut edges

Product information

Polywipe-C 120g/m² Wipes are made from standard weight 100% knitted polyester that is knife-cut to create a soft edge. Soft edge wipes are ideal for use on surfaces which are vulnerable to scratching.

The wipe is chemical resistant and very low in particles and extractable residue making it ideal for critical cleaning. The wipes are laundered and packaged in an ISO Class 4 cleanroom. The lighter basis weight provides superior value for general cleaning applications.

	Part No.	Size	Quantity
Polywipe-C Wipes Flat stacked	PC-99	9" x 9" (230 x 230mm)	75 wipes/bag; 24 bags/case
	PC-1212	12" x 12" (300 x 300mm)	75 wipes/bag; 10 bags/case

- A range of microfiber wipes, including 100% polyester and polyester/nylon blends
- Excellent for residue and particle removal
- Highly sorbent, microfiber wipes can hold more solution than standard polyester knits

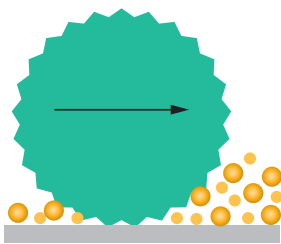
Contec® Microfiber Wipes

Microfiber wipes are the premium fabric for removing residues from surfaces, with outstanding sorbency they are excellent for trapping and removing dry particles. New blends of microfiber and polypropylene produce a cost-effective single use wipe with all the benefits of microfiber.

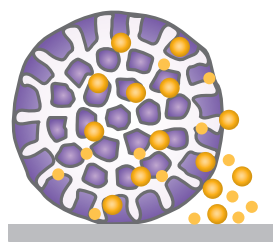
Microfiber was introduced in the late 1980's. The definition of a microfiber is a fiber with less than 1 decitex per filament, 1 decitex is 9/10 of a denier about 1/16th the diameter of a human hair. The fibers can be combined to create yarn which can be then be knitted or woven into a variety of constructions. Microfiber wipes can be made using 100% polyester fine filaments or split fibers that are a blend of polyester and nylon.

This split structure gives the wipe the ability to pick up particles even when dry, and can easily remove residues often without solvent. The increased surface area of a microfiber allows it to collect and hold dust, dirt and particles more effectively than rounded fabrics such as cotton. Virgin wipes are very soft so won't scratch surfaces, however, care should be taken when reusing microfiber wipes as particles can get stuck in the fibers which can then damage sensitive surfaces. Microfiber has a high sorption capacity around 6 to 8 times its own weight in water. The fast wicking ability means a wipe can remove spills quickly and easily, so it is very suitable for mop to dry applications.

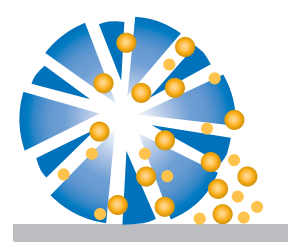
Contec has a range of microfiber wipes to choose from, 100% polyester standard fiber/microfiber blend, laundered in an ISO Class 4 cleanroom with very low levels of fibers and particles, an 80% polyester/20% nylon split microfiber and a unique cost-effective microfiber solution which has microfiber polyester yarn stitched into a polypropylene substrate.



Standard Polyester



Extruded Microfiber



Split Microfiber

Anticon® MicroQuilt Wipes

Polyester/microfiber hybrid

Product information

Anticon® MicroQuilt combines the cleanliness and sorbent capacity of Quiltex® with the microfiber particle pick-up ability of Anticon® Gold Sorb™. This hybrid creates the most sorbent, cleanest wipe Contec offers. MicroQuilt is laser-cut with heat sealed edges and cleanroom laundered to reduce the number of releasable particles and fibers. Its unique microfiber construction provides superior residue and particle removal when used dry or wet.

The 2-ply, quilted layers absorb more liquid than other wipes but readily release fluids when applying to surfaces. Composed of microfiber polyester, the wipes are durable and compatible with a wide range of solutions and disinfectants. Anticon MicroQuilt is ideal for any cleanroom application requiring high sorption capacity and superior contaminant removal.

Sterile Anticon MicroQuilt Wipes are also laundered and packed in an ISO Class 4 cleanroom before sterilization via gamma irradiation. All Contec's sterile dry wipes are validated to a SAL of 10^{-6} . Conveniently packaged in easy tear bags containing only 25 wipes per bag to eliminate wastage. A certificate of sterility is provided with each shipment.

- 230 g/m² hybrid of polyester and microfiber for the most sorbent and clean wipe
- Laminated 2-ply wipe readily releases fluid to a surface
- Unique microfiber polyester yarn offers high sorptive capacity and fast absorption rate
- Sealed edges reduce particle and fiber generation

	Part No.	Size	Quantity
Anticon MicroQuilt Flat stacked	495758-735	9" x 9" (230 x 230mm)	50 wipes/bag; 20 bags/case
	495758-737	12" x 12" (300 x 300mm)	50 wipes/bag; 10 bags/case
Anticon Sterile MicroQuilt Flat stacked	495758-736	9" x 9" (230 x 230mm)	25 wipes/bag; 40 bags/case
	495758-738	12" x 12" (300 x 300mm)	25 wipes/bag; 20 bags/case





- Recommended for ISO Class 3-8 environments
- Unique microfiber provides superior residue and particle removal even when dry
- Sealed edges to reduce particle and fiber generation
- High sorption capacity and fast sorption rate for superior spill control

Anticon® Gold Sorb™ Wipes

Blend of standard polyester and microfiber polyester with sealed edges

Product information

Anticon® Gold Sorb™ is a unique wipe which combines the performance of a microfiber yarn with that of a polyester yarn to create a wipe with superior wiping and sorption characteristics.

The sealed edges of these wipes reduces the amount of fibers released from the wipe. Anticon Gold Sorb wipes have no abrasive borders, making them particularly suitable for cleaning sensitive components. These wipes are laundered in an ISO Class 4 cleanroom.

Anticon® Sterile Gold Sorb™ is conveniently packaged in easy tear bags containing 25 wipes per bag. Anticon Sterile Gold Sorb is sterilized via gamma irradiation, and a certificate of sterility is provided with each shipment.

	Part No.	Size	Quantity
Anticon Gold Sorb Wipes Flat stacked	492238-956	9" x 9" (230 x 230mm)	75 wipes/bag; 16 bags/case
	492238-958	12" x 12" (300 x 300mm)	50 wipes/bag; 8 bags/case
Anticon Gold Sorb Wipes Bulk	492238-957	9" x 9" (230 x 230mm)	75 wipes/bag; 16 bags/case
	492238-959	12" x 12" (300 x 300mm)	50 wipes/bag; 8 bags/case
Anticon Sterile Gold Sorb Wipes Flat stacked	492238-955	9" x 9" (230 x 230mm)	75 wipes/bag; 16 bags/case
	492238-960	12" x 12" (300 x 300mm)	25 wipes/bag; 40 bags/case



MicroSilk II Wipes

75% polyester/25% nylon microfiber wipe

Product information

MicroSilk wipes are made with fabric densely knitted by continuous microdenier filament. Excellent sorbency and a soft texture makes them an excellent wipe for cleaning delicate surfaces. MicroSilk II wipes are split microfiber which means the edges of the wipe are sealed for very low levels of particles and fibers.

Laundered and double packaged in an ISO Class 4 cleanroom. Ideal for surface cleaning and polishing, the wipe easily removes both oil-based and water-based residues. The unique structure of microfiber improves the surface contact, holds more dirt than average wipes, and provides more effective cleaning.

- Recommended for ISO Class 5-8 environments
- Holds more dirt than average wipes and provides more effective cleaning
- Ideal for surface cleaning and polishing

	Part No.	Size	Quantity
MicroSilk II Wipes Flat stacked	LWMD0201	9" x 9" (230 x 230mm)	50 wipes/bag; 20 bags/case

MicroGenesis™ Wipes

100% polyester microfiber yarn knitted into a thermally bonded polypropylene substrate

Product information

MicroGenesis™ delivers the maximum amount of microfiber to pick up and retain particles, dust and other contaminants in cleanrooms. For dry applications where particle pickup and retention is critical MicroGenesis delivers unprecedented performance.

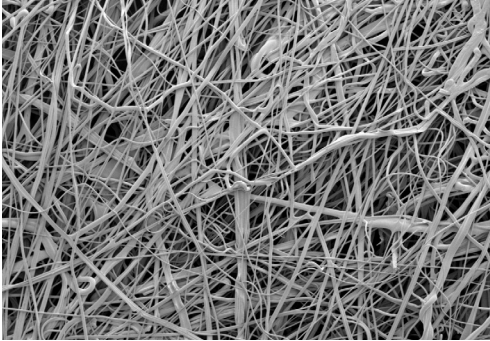
The wipe is ideal for picking up the powder residue generated in tablet and fine powder pharmaceutical manufacturing or grease removal before manufacturing batches. In addition, Contec's unique processing gives the MicroGenesis wipe excellent sorbency characteristics making it ideal for wiping to dry and disinfectant application. It is safe for use with all disinfectants including chlorine and quaternary ammonium-based products.

- Recommended for ISO Class 6-8 environments
- Microfiber is only applied to the wiping surface creating a cost-effective single use microfiber wipe
- Microfiber fabric easily picks up and retains particles

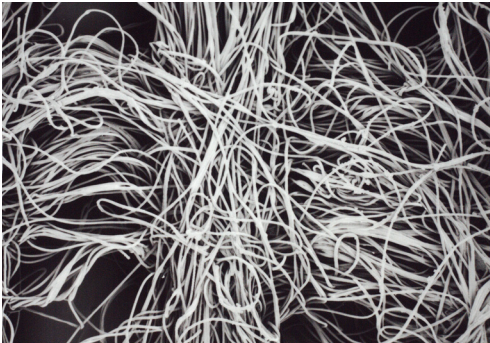
	Part No.	Size	Quantity
MicroGenesis Wipes	LWMM0100	10" x 12" (250 x 300mm)	100 wipes/bag; 8 bags/case
Bulk	LWMM0300	10" x 18" (250 x 460mm)	100 wipes/bag; 4 bags/case



Nonwoven polyester



Meltblown polypropylene



Hydroentangled polyester/cellulose

Contec® Nonwoven Wipes

Nonwoven wipes are used for a wide range of applications in controlled environments including cleaning, application of disinfectants, removal of residues, spill control, transfer disinfection as well as for general purpose wiping. Nonwoven wipes offer a variety of performance characteristics and excellent value.

Each type of fiber has a particular strength that makes it suitable for a different critical environment application. Polyester provides durability, chemical compatibility and cleanliness. Cellulose and rayon provide excellent sorbency. Polypropylene provides exceptional cleanliness and uniform application of fluids.

Most high quality nonwovens are made with a spunlaced process which hydroentangles the two fibers using high pressure jets of filtered water and cleans the fabric during the manufacturing process. No binders or additives are used resulting in a fabric which is low in fibers and residues. Another method of creating a nonwoven wipe is to use a thermal bonding process. This is used for the polypropylene wipes.

Nonwoven wipes substrates that are available, include 100% nonwoven polyester for low levels of fibers and particles and cost-effective polyester/cellulose blends which creates clean wipes with good wet strength and sorbency. Meltblown polypropylene provides a metered release of solvent so is especially suitable for the application of alcohol or disinfectant.

Hydroentangled 100% polyester

(Amplitude™ Delta™) 100% nonwoven polyester wipes with no binders or additives. Cost-effective polyester wipe with excellent cleanliness and sorbency with solvents. Very soft wipe with both wet and dry strength.

Hydroentangled polyester/cellulose

(Amplitude™ EcoCloth™, Amplitude™ Epsilon™, Amplitude™ Prozorb®, Amplitude™ Sigma™, Amplitude™ Theta™, SterileSorb™) Hydroentangled polyester/cellulose wipes which are extremely sorbent with good wet strength. Excellent general purpose wipes.

Hydroentangled polyester/Lycocell

(Amplitude™ Kappa™) A manufactured form of cellulose, Lycocell is very strong and sorbent. Sontara hydroentangled polyester/Lycocell wipes have been processed in such a way as to minimize endotoxin contamination.

Meltblown polypropylene

(Amplitude™ Helix™) Meltblown polypropylene wipes are manufactured by thermally bonding very fine polypropylene fibers to form a very clean wipe fabric with good solvent resistance. An economical wipe with low particle generation. The fine filament structure allows a metered release of alcohol or disinfectant.

Thermally laminated polypropylene/cellulose

(Amplitude™ Zeta™) Where increased sorption is required this 5-ply quilted wipe is highly sorptive with all fluids. Inner cores of cellulose between layers of polypropylene allows fluids to be absorbed and “locked” into the pockets created by the quilting process.

"Contec offers a wide range of sterile and nonsterile nonwoven wipes"

Amplitude™ Kappa™ Wipes

Polyester/Lyocell nonwoven wipes

Product information

A special hydroentangling process washes the Amplitude™ Kappa™ fabric, made of 58% polyester and 42% Lyocell (high quality rayon), to provide higher levels of cleanliness, sorbency and softness compared to similar nonwoven wipes.

Featuring a fine aperture and low levels of fibers and particles, these wipes are ideal for wiping delicate surfaces and sensitive components, as well as for other critical applications. Amplitude Kappa wipes are highly sorbent with both water and solvents and have low levels of particles and fibers. Ideal for wiping delicate surfaces such as optics, plastic and sensitive components or polishing metal surfaces.

Amplitude™ Kappa™ Sterile LE Wipes are made with Sontara® Lyocell/polyester blend fabric. These low endotoxin wipes have excellent sorbency and are validated sterile. Amplitude Kappa Sterile LE wipes are lot tested and low endotoxin certified to <20 EU/wipe.

The packaging allows for easy opening even when wearing gloves and the small quantities per bag minimize the possibility of any wastage. These wipes are ideal when increased sorbency is needed or a textured surface is required for efficient cleaning and particle removal. The wipes are also highly suitable for spill control and wiping-to-dry.

- Recommended for ISO Class 5-8 environments
- Hydroentangled process provides a soft texture for sensitive applications
- Higher levels of cleanliness compared to similar nonwoven wipes
- Low endotoxin option available - <20 EU/wipe
- Low levels of particles and fibers

	Part No.	Size	Quantity
Amplitude Kappa Wipes Flat stacked	AMLPO003	9" x 9" (230 x 230mm)	250 wipes/bag; 12 bags/case
	AMLPO004	12" x 12" (300 x 300mm)	125 wipes/bag; 18 bags/case
Amplitude Sterile Kappa LE Wipes Flat stacked	NWPZ0001	9" x 9" (230 x 230mm)	25 wipes/bag; 40 bags/case
	NWPZ0002	12" x 12" (300 x 300mm)	25 wipes/bag; 40 bags/case



Amplitude™ Delta™ Wipes

100% nonwoven polyester wipes

Product information

Amplitude™ Delta™ is made of 100% nonwoven polyester manufactured using a hydroentangling process with no binders or additives. It is a cost-effective polyester wipe which is very low in both particles and extractables.

Its open fiber structure makes it highly sorbent. It is a very soft wipe with both good wet and dry strength.

The 100% polyester is compatible with a wide range of solvents and disinfectants including hypochlorites.

- Recommended for ISO Class 5-8 environments
- 69g/m² 100% nonwoven polyester - a cost-effective polyester wipe
- Highly durable with good wet and dry strength

	Part No.	Size	Quantity
Amplitude Delta Wipes Flat stacked	AMDE0003	4" x 4" (100 x 100mm)	1200 wipes/bag; 12 bags/case
	AMDE0004	6" x 6" (150 x 150mm)	300 wipes/bag; 15 bags/case
	AMDE0001	9" x 9" (230 x 230mm)	300 wipes/bag; 12 bags/case
	AMDE0002	12" x 12" (300 x 300mm)	150 wipes/bag; 16 bags/case

Amplitude™ Helix™ Wipes

Meltblown polypropylene nonwoven wipes

Product information

Amplitude™ Helix™ wipes are manufactured from meltblown polypropylene, which combined with fine continuous filaments provides improved cleanliness. Polypropylene has excellent acid and chemical resistance, making it ideal for use in many laboratory and cleanroom applications.

The structure of the wipe is especially suitable for the metered release of solvents and disinfectants. The micro-sized filaments provide exceptional particle removal. As it is manufactured solely from synthetic fibers it ensures a wipe which has very low levels of particles and fibers. The wipe has good sorbency and could be used for chemical spills.

- Recommended for ISO Class 5-8 environments
- Continuous filaments provide low levels of particles and extractables
- Meltblown polypropylene allows metered release of disinfectants

	Part No.	Size	Quantity
Amplitude Helix Wipes Flat stacked	AMHX0003	9" x 9" (230 x 230mm)	200 wipes/bag; 12 bags/case
	AMHX0004	12" x 12" (300 x 300mm)	100 wipes/bag; 18 bags/case

Amplitude™ Sigma™ Wipes

Cellulose/polyester nonwoven wipes

Product information

Amplitude™ Sigma™ is a hydroentangled blend of 55% cellulose and 45% polyester. It is highly sorbent, has excellent durability and good cleanliness. Amplitude Sigma is strong and durable wet or dry making it excellent for use in general cleaning and spill pick up.

SterileSorb™ Wipes are sterilized via gamma irradiation, and a certificate of sterility is provided with each shipment. These wipes are packaged in linear tear inner and outer bags for ease of opening, even with gloved hands. Embossed lot numbers on both inner and outer bags ensure lot traceability.

- Recommended for ISO Class 5-8 environments
- Hydroentangled fabric provides low levels of particles and extractables
- Excellent for wiping and absorbing spills

	Part No.	Size	Quantity
Amplitude Sigma Wipes Flat stacked	AMSI0001	9" x 9" (230 x 230mm)	300 wipes/bag; 12 bags/case
	AMSI0002	12" x 12" (300 x 300mm)	150 wipes/bag; 18 bags/case
	AMSI0003	18" x 18" (460 x 460mm)	75 wipes/bag; 10 bags/case
SterileSorb Wipes Flat stacked	C2-99IR/25	9" x 9" (230 x 230mm)	25 wipes/bag; 60 bags/case
	C2-1212IR	12" x 12" (300 x 300mm)	25 wipes/bag; 42 bags/case



Amplitude™ Epsilon™ Wipes

Blue cellulose/polyester nonwoven wipes

Product information

Amplitude™ Epsilon™ is made of a special grade blue cellulose and polyester hydroentangled to form a wipe with improved cleanliness and excellent sorbency.

The cellulose uses a dye fast color, to minimize color bleeding. The blue color allows for differentiation in critical areas. Good for wet areas requiring spill pick up and clean up.

- Recommended for ISO Class 5-8 environments
- Dye-fast blue color allows for differentiation between wipes used in different areas

	Part No.	Size	Quantity
Amplitude Epsilon Wipes Flat stacked	AMEP0001	9" x 9" (230 x 230mm)	300 wipes/bag; 12 bags/case
	AMEP0002	12" x 12" (300 x 300mm)	150 wipes/bag; 20 bags/case



- Recommended for ISO Class 5-8 environments
- Low basis weight cellulose/polyester wipe with additional loft for greater sorbency
- Most sorbent of all cellulose/polyester wipes
- The lighter weight with the same performance can reduce solid waste in excess of 40%

Amplitude™ EcoCloth™ Wipes

Cellulose/polyester nonwoven wipes with additional loft

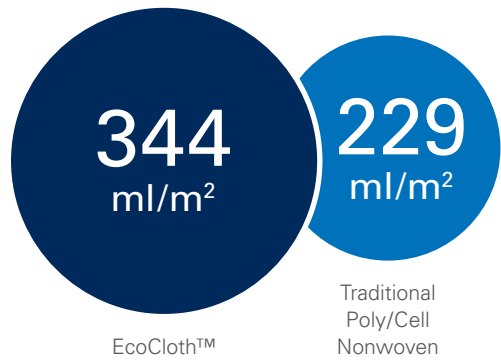
Product information

The EcoCloth™ wipe has been engineered to provide greater thickness in a lighter weight material. Amplitude™ EcoCloth™ is a hydroentangled cellulose/polyester fabric with additional loft.

It is lightweight but has excellent sorbency which exceeds comparable standard cellulose/polyester wipes. The increased thickness greatly enhances the sorbent capacity and also makes it easier for operators to pick up one wipe at a time.

Amplitude EcoCloth is a cost-effective solution for general purpose applications such as product transfer, wiping-to-dry and absorbing spills. Where customers are looking for ways to reduce their solid waste disposal for either financial or environmental reasons, the combined effect of superior performance and lighter weight gives a potential reduction in solid waste in excess of 40% compared to standard cellulose/polyester wipes. This makes Amplitude EcoCloth a very environmentally friendly choice.

Ever conscious of the environment, Contec developed Amplitude EcoCloth with a view to help customers reduce their solid waste. Amplitude EcoCloth is a slightly lower basis weight wipe than a standard polyester/cellulose wipe. However, due to additional loft in the fabric, this wipe has greater sorbency in terms of weight to capacity.



The lower basis weight of Amplitude EcoCloth can reduce your solid waste by up to 40%. This makes Amplitude EcoCloth a very environmentally friendly choice.

	Part No.	Size	Quantity
Amplitude EcoCloth Wipes Flat stacked	AMEC0001	4" x 4" (100 x 100mm)	300 wipes/bag; 48 bags/case
	AMEC0002	6" x 6" (150 x 150mm)	300 wipes/bag; 20 bags/case
	AMEC0003	9" x 9" (230 x 230mm)	300 wipes/bag; 12 bags/case
	AMEC0004	12" x 12" (300 x 300mm)	150 wipes/bag; 14 bags/case
	AMEC0005	18" x 18" (460 x 460mm)	75 wipes/bag; 10 bags/case

Amplitude™ Prozorb® Wipes

Textured cellulose/polyester nonwoven wipes

Product information

Amplitude™ Prozorb® Wipes are a hydroentangled blend of cellulose and polyester, produced through a special process that creates apertures in the fabric while enhancing the thickness and providing excellent cleanliness. The resulting wipe has a durable textured surface that promotes its cleaning and particle removal capability.

This unique manufacturing process also give this wipe excellent sorbency, it probably has the greatest level of intrinsic sorbency and quickest rate of sorbency of any similar weight nonwoven wipe. This coupled with the low level of particles and extractables make this wipe ideal for spill clean up in critical environments, biofilm and residue removal, product wipe down prior to cleanroom entry and wiping-to-dry.

- Recommended for ISO Class 5-8 environments
- Textured surface promotes effective cleaning and particle removal
- Excellent sorbency and quickest rate of sorbency of any similar weight nonwoven wipe

	Part No.	Size	Quantity
Amplitude Prozorb Wipes Flat stacked	PZ-99	9" x 9" (230 x 230mm)	200 wipes/bag; 12 bags/case
	PZ-1212	12" x 12" (300 x 300mm)	100 wipes/bag; 18 bags/case

Amplitude™ Theta™ Wipes

Cellulose/polyester nonwoven wipes

Product information

Amplitude™ Theta™ is made from a lightweight hydroentangled cellulose/polyester which creates an economical sorbent wipe ideal for general cleaning applications. It has excellent durability and sorbency. Designed for nonabrasive applications, such as general purpose wiping and polishing of surfaces.

- Recommended for ISO Class 5-8 environments
- Economical and cost-effective nonwoven wipe
- Lightweight sorbent wipe

	Part No.	Size	Quantity
Amplitude Theta Wipes Flat stacked	AMTH0001	9" x 9" (230 x 230mm)	300 wipes/bag; 12 bags/case
	AMTH0002	12" x 12" (300 x 300mm)	150 wipes/bag; 22 bags/case



- Recommended for ISO Class 6-8 environments
- 5-ply quilted pattern allows for segregation by appearance
- High level of cleanliness for a general purpose wipe

Amplitude™ Zeta™ Wipes

Thermally bonded polypropylene and cellulose quilted nonwoven wipes

Product information

Amplitude™ Zeta™ Wipes are made from a 5-ply thermally bonded substrate which comprises of 2 layers of cellulose sealed between layers of meltblown polypropylene. This creates a material which is very sorbent and has a high level of cleanliness.

The wipes have good chemical compatibility and are resistant to most disinfectants and solvents, including acids. Sorbent enough for solvent and acid spills, they are also ideal for wiping to dry applications. Amplitude Zeta wipes make useful tray liners and are suitable for general and lab area applications.

	Part No.	Size	Quantity
Amplitude Zeta Wipes	AMZE0001	8" x 9" (200 x 230mm)	150 wipes/bag; 12 bags/case
Flat stacked	AMZE0002	11" x 12" (280 x 300mm)	75 wipes/bag; 20 bags/case

TuffStuff™ Wipes

Critical task wipes

Product information

TuffStuff™ Wipes are high quality critical task wipes manufactured from hydroentangled cellulose/polyester. The wipes contain no binders or adhesives. Available in Light, Medium and Heavy Duty versions, these wipes are solvent resistant and maintain their strength even when wet.

The wipes are creped to provide a soft feel. TuffStuff wipes offer exceptional durability and cleanliness making them ideal for critical cleaning in lower grade cleanrooms and outer areas.

TuffStuff Wipes are available in multiple sizes, weights, and packaging configurations to meet the various customer needs.



- Recommended for ISO Class 6-8 environments
- Hydroentangled nonwoven wipes are strong and durable without the use of binders
- Light, medium and heavy duty wipes available to allow user to match the ideal wipe for the specific application

	Part No.	Size	Quantity
TuffStuff Heavy Duty Wipes - Quarter folded	C1C1217Q	12" x 17" (300 x 430mm)	500 wipes/bag; 2 bags/case
TuffStuff Heavy Duty Wipes - Pop-up dispenser box	TSWC0917	9" x 16.5" (230 x 420mm)	100 wipes/box; 8 boxes/case
	TSWC1217	12" x 16.5" (300 x 420mm)	125 wipes/box; 2 boxes/case
TuffStuff Heavy Duty Wipes - Roll in a dispenser box	TSWC1214	12" x 13" (300 x 330mm)	500 wipes/roll; 1 roll/case
TuffStuff Medium Duty Wipes - Quarter folded	TSWL1213	12" x 13" (300 x 330mm)	50 wipes/bag; 18 bags/case
	TSWL1217	12" x 17" (300 x 420mm)	50 wipes/bag; 18 bags/case
TuffStuff Light Duty Wipes - Quarter folded	TSWS1213	12" x 13" (300 x 330mm)	50 wipes/bag; 10 bags/case
TuffStuff Light Duty Wipes - Perforated roll	TSWS1014	9.5" x 13.5" (240 x 340mm)	500 wipes/roll; 1 roll/case



- Recommended for ISO Class 3-8 environments
- Polyester fabric is extremely low in both particles and extractables
- Good sorbency makes it compatible with many solvents

Polynit-Z Wipes

Knitted polyester electrostatic dissipative wipe

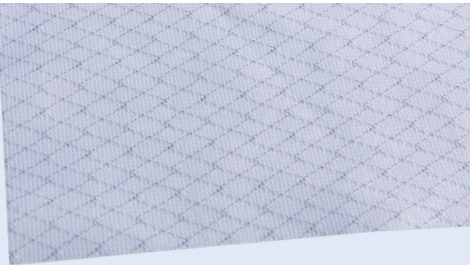
Product information

Polynit-Z Wipes are constructed using conductive yarns within the polyester interlock knit that features an unidirectional conductive pattern. It is a very clean static dissipative wipe that is well suited for applications sensitive to electrostatic discharge.

The average surface resistivity is 3.5×10^{10} ohms/sq. Polynit-Z wipes are laundered and packaged in an ISO Class 4 cleanroom environment.

The laser-cut edges seal fibers at the wipe's edge. The wipes are ideal for cleaning the interior surface of process tools and other equipment.

	Part No.	Size	Quantity
Polynit-Z Wipes Flat stacked	LWZS0001	9" x 9" (230 x 230mm)	75 wipes/bag; 16 bags/case



- Recommended for ISO Class 3-8 environments
- Knitted with a conductive fiber in a specially designed grid pattern that minimizes "hot spots"
- Antistatic fabric is abrasion and chemical resistant

StatZorb™ Wipes

Knitted polyester electrostatic dissipative wipe

Product information

The StatZorb™ Wipe is made from polyester fabric with a conductive fiber knitted in a specially designed grid pattern that minimizes hot spots. The antistatic properties are uniform on both sides of the wipe. The surface resistivity is 43×10^7 ohms/sq. and the static decay time is less than 1.5 seconds.

The wipes are laundered and packaged in an ISO Class 4 cleanroom for very low levels of particles and fibers. The laser-cut edges seal particles at the wipes edge. The wipe are ideal for the dry wiping of sensitive electronic components and general cleaning in ESD sensitive areas. They are also suitable for use in disc drive or MR head manufacturing.

	Part No.	Size	Quantity
StatZorb Wipes Flat stacked	SZ-99	9" x 9" (230 x 230mm)	75 wipes/bag; 24 bags/case

Twill Jean Wipes

Woven cotton twill wipes

Product information

The Twill Jean Wipe is a 100% cotton fabric, woven in a 2 x 1 twill construction.

The wipes are very sorbent and have high thermal stability for high temperature applications.

The edges are bias cut to prevent unraveling. Excellent for spill pick up or general cleaning in lower grade areas.

- Strong and sorbent
- Suitable for high temperature applications
- Durable fabric for tough tasks
- Bias cut edges to reduce unraveling

	Part No.	Size	Quantity
Twill Jean Wipes	TJ-99	9" x 9" (230 x 230mm)	300 wipes/bag; 12 bags/case
Flat stacked	TJ-1212	12" x 12" (300 x 300mm)	150 wipes/bag; 10 bags/case

Amplitude™ Optic Wipes

Optical grade cellulose wipes

Product information

Amplitude™ Optic wipes are 100% nonwoven cellulose. The wipe consists of long staple fibers which are wet laid in a paper making process to form an extremely clean sheet.

It features very low levels of extractables and only moderate particle generation. The wipe has a nonabrasive surface texture. The wipes are both sorbent and optical grade.

These nonwoven wipes were specifically designed for the delicate cleaning of optical products and microminiature electronic components. It can also be used as a lining for cleanroom surfaces and trays.

- Recommended for ISO Class 6-8 environments
- Long staple fibers create a nonabrasive wipe which is also sorbent
- Nonwoven wipe with very low levels of extractables

	Part No.	Size	Quantity
Amplitude Optic Wipes	C6-99	9" x 9" (230 x 230mm)	500 wipes/bag; 25 bags/case
Flat stacked	C6-1212	12" x 12" (300 x 300mm)	500 wipes/bag; 20 bags/case



- Range of substrates and formats suitable for all areas of the cleanroom facility
- Easy-to-use, allowing rapid, effective and efficient application of the alcohol solution
- Presaturated wipes significantly reduce airborne levels of alcohol solution and improve operator safety
- Improve process control and repeatability

"Contec offers a wide range of sterile and nonsterile presaturated wipes"

Contec® Presaturated Wipes

Presaturated wipes can offer many benefits over bottled alcohol and dry wipes for cleanroom use. They reduce solvent use and increase convenience in hand wiping. Since they provide exceptional solvent control presaturated wipes are widely used by the medical device and pharmaceutical industries.

Contec supplies two ranges of presaturated wipes:

- the PROSAT® range for higher grade cleanrooms, packaged in small quantities in resealable pouches to prevent drying out and preserve cleanliness
- and SATWIPES® packaged in reusable canisters for use when large numbers of presaturated wipes are needed.

The PROSAT pouches are available with small numbers of wipes per pouch meaning all wipes can be used in a session ensuring no wastage. Wipes are available as 100% polyester knits for very low levels of fibers and particles down to cost-effective polyester/cellulose blends, so suitable for all grades of cleanroom. For product contact areas, wipes with guaranteed low levels of endotoxins are available.

Where large volumes of presaturated wipes are required the wipes are supplied in reusable self closing canisters in a perforated center-pull roll. Wipe substrates in the SATWIPES range include nonwoven polyester, polyester/cellulose and polyester/nylon.

Contec's presaturated wipes can be tailored to your specific requirements. Variables include fabric selection, solvent, saturation levels from 9 - 99% IPA and packaging.

Features and benefits

Guaranteed saturation levels with either IPA or denatured ethanol

- Reduces airborne levels of alcohol helping to meet Health and Safety limits
- Reduces hazardous waste by up to 40%
- Reduces validation work
- Reduces costs
- Reduces inventory and storage space required
- Increases operator and environmental safety
- Increases process control and repeatability
- Increases convenience

Resealable pouches with small quantities of wipes

- Suitable for use in the highest grade cleanrooms with no wastage

Wide range of substrates available

- Most cost-effective and suitable wipe can be used in each cleanroom area

Validated sterile options

- Meets GMP requirements for sterile products in Grade A and B zones

Refillable self-closing canister

- Convenient and cost-effective method of presaturated wipe presentation.

Presaturated Wipes Options

Contec's presaturated wipes are available in a number of formats specifically designed for different areas of use within the cleanroom.

Resealable pouches

For sterile and small-area use, presaturated wipes are available folded in resealable pouches. This makes the packaging compact for use in high grade areas where space is a constraint. Sterile products are usually packaged in small quantities of wipe per pouch so the wipes can easily be used up in one session to avoid wastage.

Alternatively for larger areas, more cost-effective resealable pouches with flat stacked wipes are available.

All PROSAT branded wipes are available in peel and reseal pouches.

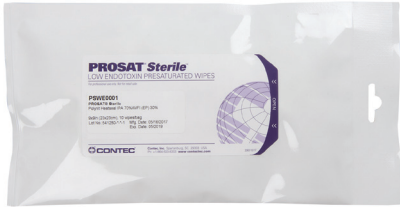
Center-pull canisters

Originally developed as a safe and better way to handle aggressive solvents, Contec SATWIPES are presaturated wipes dispensed from a center-pull roll in a reusable canister. The easily closed canister lid helps maintain saturation levels and reduce airborne vapors.

SATWIPES® Delta™ and Sigma™ wipes are provided with a small reusable canister to reduce packaging waste and 12 refill rolls. To preserve product integrity the rolls are packaged in specially designed pouches, which are opened and loaded inside the SATWIPES canister.

Slide 'n Seal Bags

Presaturated Polywipe-C Heatseal Wipes are available bulk packed in Contec's Slide 'n Seal Bag. This is a resealable bag that allows easy dispensing of the presaturated wipes. A tight seal is ensured every time the bag is closed without the use of any adhesives ensuring the wipes remain saturated throughout the period of use. The gusseted base means the bag will stand independently for wipes to be easily removed.



Compact PROSAT Pouches



Large PROSAT Pouches



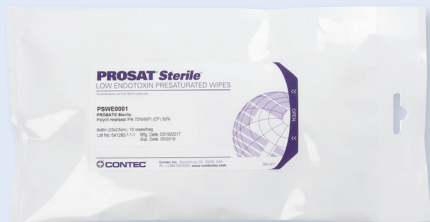
Refillable canisters



Center-pull container



Slide 'n Seal Bag



- Recommended for ISO Class 3-8 environments
- Low in both particles and extractable contaminants
- 100% knitted polyester is abrasion and chemical resistant
- Resealable pouch preserves cleanliness and reduces solvent evaporation
- Available sterile and with guaranteed low levels of endotoxins

PROSAT® Polynit Heatseal Wipes

100% no-run interlock knit polyester wipes presaturated with 70% IPA

Product information

PROSAT® Polynit Heatseal Wipes are manufactured from 100% knitted textured polyester with laser-cut sealed edges for very low levels of particles and fibers.

Polyester wipes are chemically resistant and exceptionally low in particles and fibers. The wipes are laundered and packaged in an ISO Class 4 cleanroom.

The wipes are presaturated with a blend of 70% IPA and 30% deionized water. Presaturated wipes ensure consistent saturation of each wipe independent of the operator. They can increase solvent control and accountability as well as reduce VOC emissions. The wipes are provided in convenient and easy-to-use peel and reseal pouches.

PROSAT® Sterile Polynit Heatseal Wipes are sterile by gamma irradiation, validated per AAMI Guidelines to a 10^{-6} SAL, so can be used in the highest grade life science cleanrooms. Each resealable pouch contains a small number of wipes eliminating any waste at the end of a session.

PROSAT® Sterile™ Polynit Heatseal LE Wipes are made from the same 100% knitted polyester but presaturated with a blend of 70% IPA and 30% Water for Injection (WFI). Each lot is tested before release and low endotoxin certified to <1 EU/wipe. The low levels of endotoxins, and particles and fibers make these wipes ideal for use on product contact surfaces.

PROSAT® Sterile™ Polynit Heatseal LE Wipes are either individually double or triple bagged for easy entry into the sterile suite. The pouches have been reduced in size and fitted with a hanging slot* to be easy-to-use in mini environments.

(* Not PSWE0002)

	Part No.	Size	Quantity
PROSAT Polynit Heatseal Wipes Presaturated with 70% IPA and 30% DI water	PS-HS9-7030 (flat stacked)	9" x 9" (230 x 230mm)	30 wipes/pouch; 30 pouches/case
	PSPS0047 (flat stacked)	12" x 12" (300 x 300mm)	30 wipes/pouch; 20 pouches/case
PROSAT Sterile Polynit Heatseal Wipes Presaturated with 70% IPA and 30% DI water	PSPS0076 (folded)	9" x 9" (230 x 230mm)	20 wipes/pouch; 40 pouches/case
	PSPS0091 (flat stacked)	12" x 12" (300 x 300mm)	20 wipes/pouch; 20 pouches/case
PROSAT Sterile Polynit Heatseal LE Wipes Presaturated with 70% IPA and 30% Water for Injection	PSWE0001 (folded)	9" x 9" (230 x 230mm)	10 wipes/pouch; 55 pouches/case
	PSWE0002 (flat stacked)	12" x 12" (300 x 300mm)	30 wipes/pouch; 15 pouches/case
	PSWE0003 (folded)	12" x 12" (300 x 300mm)	10 wipes/pouch; 30 pouches/case



- Recommended for ISO Class 3 - 8 environments
- Very low in particle and fiber generation to prevent contamination
- Small number of wipes per resealable pouch helps eliminate waste
- Slide 'n Seal bags allow easy dispensing of bulk nonsterile wipes

PROSAT® Polywipe-C Heatseal Wipes

100% interlock knit standard weight polyester presaturated with 70% IPA

Product information

PROSAT® Polywipe-C Heatseal Wipes are made from a standard weight 120 g/m² 100% knitted polyester that is laser-cut to bond the fibers at the edges of the wipe. Laser cutting seals the fibers at the edge of the wipe reducing particle and fiber generation. These wipes are presaturated with 70% IPA and 30% deionized water.

The wipes are chemically resistant and low in particles and extractable residue making it ideal for critical cleaning. The wipes are laundered and package in an ISO Class 4 cleanroom.

The nonsterile wipes are available bulk packed in Contec's Slide 'n Seal Bag. This is a resealable bag that allows easy dispensing of the presaturated wipes. A tight seal is ensured every time the bag is closed without the use of any adhesives. The gusseted base means the bag will stand independently for wipes to be easily removed. Both types of packaging ensure the wipes remain saturated throughout the period of use.

PROSAT® Sterile™ Polywipe-C Heatseal Wipes are gamma irradiated and validated per AAMI Guidelines to a 10⁻⁶ SAL, so can be used in the highest grade life science cleanrooms. The sterile wipes are provided in convenient and easy-to-use peel and reseal pouches. The resealable pouches have a small number of wipes per pouch to reduce waste and control saturation volume and cleanliness.



	Part No.	Size	Quantity
PROSAT Polywipe-C Heatseal Wipes with Slide 'n Seal Bags Presaturated with 70% IPA and 30% DI water	PSCS0009B	9" x 9" (230 x 230mm)	60 wipes/bag; 12 bags/case
	PSPS0012B	12" x 12" (300 x 300mm)	30 wipes/bag; 12 bags/case
PROSAT Sterile Polywipe-C Heatseal Wipes Presaturated with 70% IPA and 30% DI water	PSCS0009 (folded)	9" x 9" (230 x 230mm)	20 wipes/pouch; 24 pouches/case
	PSPS0012 (folded)	12" x 12" (300 x 300mm)	20 wipes/pouch; 24 pouches/case





- Recommended for ISO Class 5-8 environments
- Hydroentangled polyester fabric is highly sorbent with good wet strength
- Low in particles and fibers
- Ideal cost-effective polyester wipe

PROSAT® Sterile™ Delta™ Wipes

100% nonwoven polyester wipes
presaturated with 70% IPA

Product information

PROSAT® Sterile™ Delta™ Wipes are made from a 100% nonwoven polyester fibers which are hydroentangled together using no binders or additives. The resulting fabric is extremely soft, clean and strong. The wipes are very low in particles, fibers and extractables.

PROSAT Sterile Delta Wipes are a cost-effective polyester wipe with excellent cleanliness and wet strength, the wipes can be used for many general cleaning and disinfecting applications.

The wipes are sterilized by gamma radiation and validated sterile to AAMI Guidelines so are ideal for use in higher grade pharmaceutical cleanrooms. The wipes are provided in convenient and easy-to-use peel and reseal pouches.

	Part No.	Size	Quantity
PROSAT Sterile Delta Wipes Presaturated with 70% IPA and 30% DI water 	PS-7030IR (folded)	9" x 9" (230 x 230mm)	20 wipes/pouch; 40 pouches/case



- Recommended for ISO Class 5-8 environments
- Semiconductor grade solution is 0.2 micron filtered and meets SEMI requirements for metals
- Durable nonwoven polyester is low in both particles and extractables

PROSAT® PS-Si Delta™ Wipes

100% nonwoven polyester wipes
presaturated with 10% IPA

Product information

PROSAT® PS-Si presaturated wipes feature 100% nonwoven polyester presaturated with a blend of 10% IPA and 90% DI water. Designed for the semiconductor industry, the PROSAT PS-Si provides the cleanest nonwoven wipe available. The 100% nonwoven polyester fibers are hydroentangled into an extremely soft, clean, and strong fabric which is very low in both particles and extractables.

The blend of 10% IPA and 90% deionized water combines cleaning effectiveness with safety. The semiconductor grade solution is 0.2 micron filtered and meets SEMI specifications for metals.

Available in convenient, easy-to-use resealable pouches which are individually lot numbered for traceability. PROSAT PS-Si wipes are an effective, efficient and convenient method for cleaning process tools and other equipment.

	Part No.	Size	Quantity
PROSAT PS-Si Delta Wipes Presaturated with 10% IPA and 90% DI water	PS-Si (folded)	9" x 9" (230 x 230mm)	30 wipes/pouch; 50 pouches/case



- Recommended for ISO Class 5-8 environments
- Hydroentangled polyester fabric is highly sorbent with good wet strength
- Low in particles and fibers
- Ideal cost-effective polyester wipe

SATWIPES® Delta™ Wipes

100% nonwoven polyester wipes
presaturated with 70% IPA

Product information

SATWIPES® Delta™ consists of a perforated roll of saturated wipes which are dispensed through a center-pull canister. The wipes consist of 100% nonwoven polyester fabric creating a soft, durable, and clean wipe. The wipes are very low in particles, fibers, and extractables. SATWIPES Delta are a cost-effective polyester wipe with excellent cleanliness and wet strength, the wipes can be used for many general cleaning applications.

To reduce packaging waste, each case of SAT-C3-7030 is supplied with one canister and 12 refill rolls. To preserve product integrity the rolls are packaged in specially designed pouches, which are opened and loaded inside the SATWIPES canister. Refill pouches can be purchased separately, SAT-C3-7030/18. Additional canisters can also be purchased SAT-CAN120.

	Part No.	Size	Quantity
SATWIPES Delta Wipes Presaturated with 70% IPA and 30% DI water	SAT-C3-7030	6" x 9" (150 x 230mm)	100 wipes/roll; 12 rolls/case; 1 canister/case
	SAT-C3-7030/18	6" x 9" (150 x 230mm)	100 wipes/roll; 18 rolls/case
SATWIPES Canister	SAT-CAN120		10 canisters/case



- Recommended for ISO Class 5 - 8 environments
- Low in particles and fibers making an excellent general purpose wipes
- Solvent use is reduced by up to 35%

SATWIPES® Delta™ Wipes

100% nonwoven polyester wipes
presaturated with 99% IPA

Product information

SATWIPES® Delta™ consists of a perforated roll of saturated wipes which are dispensed through a center-pull canister. Presaturated with 99% IPA the wipes are ideal for cleaning and residue removal in critical manufacturing. The wipes consist of 100% nonwoven polyester fabric creating a soft, durable, and clean wipe.

The use of a presaturated wipe provides a safe cleaning option when using a high concentration of solvent. Solvent use is reduced by up to 35%. To reduce packaging waste, each case is supplied with one canister and 12 refill rolls. To preserve product integrity the rolls are packaged in specially designed pouches, which are opened and loaded inside the SATWIPES canister.

	Part No.	Size	Quantity
SATWIPES Delta Wipes Presaturated with 99% IPA	SAT-C3-100	6" x 9" (150 x 230mm)	100 wipes/roll; 12 rolls/case
SATWIPES Canister	SAT-CAN120		10 canisters/case



- Recommended for ISO Class 5-8 environments
- Meltblown polypropylene fabric is exceptionally clean and free from additives
- Low in particles and fibers so ideal for a variety of critical applications
- Available sterile and with a low endotoxin claim

PROSAT® Meltblown Polypropylene Wipes

Presaturated with 70% IPA or 70% denatured ethanol

Product information

PROSAT® meltblown polypropylene wipes offer exceptional cleanliness and are suitable for use in a wide variety of critical environments. Saturated with a solution of 70% IPA or denatured ethanol with 30% deionized water, the wipes provide a uniform and consistent application of the solution to the surface.

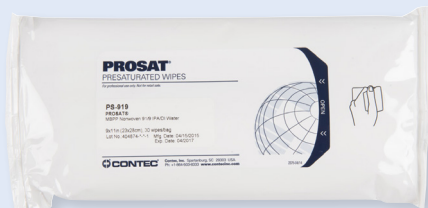
PROSAT meltblown polypropylene wipes are exceptionally clean and also free from additives of any kind. This particular meltblown polypropylene contains very low levels of sodium and other ions. The meltblown polypropylene wipes provide a consistent release of solvent to thoroughly remove surface contaminants in critical environments.

The wipes are provided folded in convenient and easy-to-use peel and reseal pouches. Suitable for use in many critical environments, PROSAT meltblown polypropylene wipes are ideal for wiping articles prior to pass through, cleaning process tools and other equipment, general surface cleaning and cleaning prior to decal application. The solvent blend meets either SEMI specifications for metals and contaminants, ensuring the wipes are suitable for use in microelectronic facilities or USP grade for life science cleanrooms.

Contec's PROSAT® *Sterile*™ Polypropylene wipes are available sterile by gamma irradiation validated per AAMI Guidelines to a 10⁻⁶ SAL, so can be used in the highest grade life science cleanrooms. The sterile pouches have a smaller number of wipes per pouch to ensure all wipes can be used up in one session.

Contec's PROSAT® *Sterile*™ Meltblown Polypropylene LE wipes are also presaturated with 70% USP grade IPA and 30% deionized water, but have a guaranteed low endotoxin level. Each lot is tested before release and low endotoxin certified to <20 EU/wipe, eliminating the risk of introducing endotoxins and other contaminants into product contact areas.

	Part No.	Size	Quantity
PROSAT Meltblown Polypropylene Wipes Presaturated with 70% IPA and 30% DI water	PS-850	8" x 8" (200 x 200mm)	50 wipes/pouch; 50 pouches/case
	PS-911	9" x 11" (230 x 280mm)	30 wipes/pouch; 50 pouches/case
	PSPP0043	9" x 11" (230 x 280mm)	50 wipes/pouch; 40 pouches/case
PROSAT Meltblown Polypropylene Wipes Presaturated with 70% DE and 30% DI water	PS-911ETOH	9" x 11" (230 x 280mm)	30 wipes/pouch; 50 pouches/case
PROSAT <i>Sterile</i> Meltblown Polypropylene Wipes Presaturated with 70% IPA and 30% DI water	PS-840IR	8" x 8" (200 x 200mm)	40 wipes/pouch; 24 pouches/case
	PS-911EB	9" x 11" (230 x 280mm)	30 wipes/pouch; 48 pouches/case
	PSPP0039	9" x 11" (230 x 280mm)	50 wipes/pouch; 24 pouches/case
PROSAT <i>Sterile</i> Meltblown Polypropylene Wipes Presaturated with 70% IPA and 30% DI water	PS-911EB/ETOH	9" x 11" (230 x 280mm)	30 wipes/pouch; 48 pouches/case
PROSAT <i>Sterile</i> Meltblown Polypropylene LE Wipes Presaturated with 70% IPA and 30% DI water	PS-911LE	9" x 11" (230 x 280mm)	30 wipes/pouch; 36 pouches/case



- Recommended for ISO Class 5-8 environments
- Excellent choice when fast drying times are required
- Meltblown polypropylene fabric is exceptionally clean and free from additives

PROSAT® Meltblown Polypropylene Wipes

Presaturated with 91% IPA and 9% Deionized water

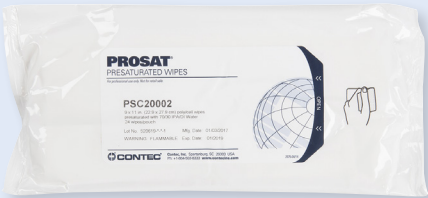
Product information

PROSAT® PS-919 Meltblown Polypropylene Wipes are presaturated with a blend of 91% IPA and 9% DI water and are an excellent choice for general surface cleaning where fast drying times are desired. Manufactured from meltblown polypropylene these PROSAT wipes offer exceptional cleanliness. They are low in nonvolatile residues as well as particles and fibers.

Available in convenient, easy-to-use resealable pouches which are individually lot numbered for traceability. These specially designed pouches preserve cleanliness and solvent saturation levels. The use of presaturated wipes reduces VOC emissions and solvent use up to 35% compared to spraying.

PROSAT wipes are an effective, efficient and convenient method of cleaning process tools and other equipment.

	Part No.	Size	Quantity
PROSAT PS-919 Meltblown Polypropylene Wipes Presaturated with 91% IPA and 9% DI water	PS-919 (folded)	9" x 11" (230 x 280mm)	30 wipes/pouch; 50 pouches/case



- Recommended for ISO Class 5-8 environments
- Cost-effective cleanroom wipe with low levels of particles and fibers
- Highly sorbent with good wet strength
- Available validated sterile

PROSAT® Sigma™ Wipes

Cellulose/polyester nonwoven
wipes presaturated with 70% alcohol

Product information

PROSAT® Sigma™ wipes are manufactured from 68g/m² hydroentangled cellulose/polyester and saturated with a choice of 70% IPA and deionized water.

Cellulose/polyester wipes are a cost-effective cleanroom wipe, with low levels of particles and fibers. Highly sorbent with good wet strength, the wipes can be used for many general cleaning applications. Ideal for wiping articles prior to pass through, routine cleaning and wipe down of lab tools, instruments and other equipment.

The wipes are provided in convenient and easy-to-use peel and reseal pouches. The resealable pouches preserve solvent saturation and cleanliness.

PROSAT® *Sterile*™ Sigma™ wipes are gamma irradiated and validated per AAMI Guidelines to a 10⁻⁶ SAL, so can be used in all grades of life science cleanroom. The sterile pouches have a small number of wipes per pouch to ensure all wipes can be used up in one session.

	Part No.	Size	Quantity
PROSAT Sigma Wipes Presaturated with 70% IPA and 30% DI water	PSC20002 (folded)	9" x 11" (230 x 280mm)	24 wipes/pouch; 50 pouches/case
PROSAT <i>Sterile</i> Sigma Wipes Presaturated with 70% IPA and 30% DI water	PSC20001 (folded)	9" x 11" (230 x 280mm)	24 wipes/pouch; 48 pouches/case



- Recommended for ISO Class 6-8 environments
- Cost-effective cleanroom wipe with low levels of particles and fibers
- Highly sorbent with good wet strength

SATWIPES® Sigma™ Wipes

Cellulose/polyester nonwoven wipes presaturated with 70% IPA

Product information

SATWIPES® Sigma™ consists of a perforated roll of saturated wipes which are dispensed through a center-pull canister. SATWIPES Sigma wipes are manufactured from 68g/m² hydroentangled cellulose/polyester and saturated with 70% IPA and deionized water.

Cellulose/polyester wipes are a cost-effective cleanroom wipe, with low levels of particles and fibers. Highly sorbent with good wet strength, the wipes can be used for many general cleaning applications.

To reduce packaging waste each case is supplied with one canister and 12 refill rolls. To preserve product integrity the rolls are packaged in specially designed pouches, which are opened and loaded inside the SATWIPES canister. Refill pouches can be purchased separately, SAT-C1-7030/18. Additional canisters can also be purchased SAT-CAN120.

	Part No.	Size	Quantity
SATWIPES Sigma Wipes Presaturated with 70% IPA and 30% DI water	SAT-C1-7030	6" x 9" (150 x 230mm)	100 wipes/roll; 12 rolls/case
	SAT-C1-7030/18	6" x 9" (150 x 230mm)	100 wipes/roll; 18 rolls/case
SATWIPES Canister	SAT-CAN120		10 canisters/case



- Recommended for ISO Class 6-8 environments
- Cost-effective cleanroom wipe with low levels of particles and fibers
- Highly sorbent with good wet strength

SATWIPES® Sigma™ Wipes

Cellulose/polyester wipes presaturated with 99% IPA

Product information

SATWIPES® Sigma™ consists of a perforated roll of saturated wipes which are dispensed through a center-pull canister. Presaturated with 99% IPA the wipes are ideal for cleaning and residue removal in critical manufacturing. The wipes are manufactured from 68g/m² hydroentangled cellulose/polyester. Cellulose/polyester wipes are a cost-effective cleanroom wipe, with low levels of particles and fibers.

The use of a presaturated wipe provides a safe cleaning option when using a high concentration of solvent. Solvent use is reduced by up to 35%. To reduce packaging waste, each case is supplied with one canister and 12 refill rolls. To preserve product integrity the rolls are packaged in specially designed pouches, which are opened and loaded inside the SATWIPES canister.

	Part No.	Size	Quantity
SATWIPES Sigma Wipes Presaturated with 99% IPA	SAT-C1-100	6" x 9" (150 x 230mm)	100 wipes/roll; 12 rolls/case
SATWIPES Canister	SAT-CAN120		10 canisters/case



- Recommended for ISO Class 5-8 environments
- Lightweight nonwoven material which is low in particles and fibers making an excellent general purpose wipes
- Highly sorbent with good wet strength

PROSAT® Theta™ Wipes

Cellulose/polyester nonwoven wipes presaturated with 70% IPA

Product information

PROSAT® Theta™ wipes consist of 54g/m² cellulose/polyester hydroentangled wipes saturated with a solution of 70% IPA and 30% deionized water so are ideal for use in life science applications.

Cellulose/polyester wipes are a cost-effective cleanroom wipe, with low levels of particles and fibers. Highly sorbent with good wet strength, the wipes can be used for many general cleaning applications. Ideal for wiping articles prior to pass through, routine cleaning and wipe down of lab tools, instruments and other equipment.

PROSAT® Sterile™ Theta™ wipes are gamma irradiated and validated per AAMI Guidelines to a 10⁻⁶ SAL, so can be used in all grades of life science cleanroom.

	Part No.	Size	Quantity
PROSAT Theta Wipes Presaturated with 70% IPA and 30% DI water	PSC20006 (folded)	9" x 11" (230 x 280mm)	50 wipes/pouch; 28 pouches/case
PROSAT Sterile Theta Wipes Presaturated with 70% IPA and 30% DI water	PSC20005 (folded)	9" x 11" (230 x 280mm)	50 wipes/pouch; 28 pouches/case



- Recommended for ISO Class 5-8 environments
- Split microfiber increases cleaning effectiveness and contaminant pick up with an even laydown of solvent to surface
- Greater surface coverage saves time and materials needed to clean

PROSAT® Pi Wipes


Polyester/nylon split microfiber wipes presaturated with 70% IPA

Product information

PROSAT® Pi wipes are designed to help life science manufacturers control contamination and ultimately maintain cGMP compliance while consuming less resources. The wipes are made from polyester and nylon split microfiber, enhancing their cleaning effectiveness and contaminant pick-up ability. The 80gsm microfiber fabric is highly sorbent and offers metered release of solvent to surfaces, covering greater areas compared to other presaturated wipes.

PROSAT Pi wipes are presaturated with 70% USP Grade IPA and 30% DI water, allowing for controlled application to surfaces and less VOCs compared to spraying. The peel-and-reseal pouch can be resealed throughout use to maintain the wipes’ saturation level and IPA concentration.

PROSAT Pi wipes are ideal for pharmaceutical, biotechnology and medical device manufacturers.

	Part No.	Size	Quantity
<div>PROSAT Sterile Pi Microfiber Wipes</div> <div>Presaturated with 70% IPA and 30% DI water</div> <div> Sterile</div>	PS-314IR	9" x 9" (230 x 230mm)	20 wipes/pouch; 40 pouches/case
<div>PROSAT Pi Microfiber Wipes</div> <div>Presaturated with 70% IPA and 30% DI water</div>	PS-314	9" x 9" (230 x 230mm)	20 wipes/pouch; 40 pouches/case

Contec® Knitted Wipe Comparison Guide

Brand	Substrate	Dry	Presat Pouch	Presat Canister	Sterile Option	Low Endotoxin	Edge Type	Weight g/m ²	Area of Use	Area of Use (GMP)	Extrinsic sorbency ml/m ²	Particles ≥ 0.5 μm x 10 ⁶ /m ²	Fibers > 100 μm x 10 ³ /m ²
Quiltex I	2-ply 100% polyester interlock knit	Yes			Yes		Sealed	240	ISO 3-8	A-D	581	5.70	0.14
Anticon Gold HeavyWeight	100% no-run interlock knit polyester	Yes			Yes		Sealed	140	ISO 3-8	A-D	471	4.34	0.14
Polynit Heatseal	100% no-run interlock knit polyester	Yes			Yes	Yes	Sealed	140	ISO 3-8	A-D	359	2.20	0.16
PROSAT Polynit Heatseal	100% no-run interlock knit polyester		Yes		Yes	Yes	Sealed	140	ISO 3-8	A-D	N/A	2.60	0.14
Anticon 100 HeavyWeight	100% no-run interlock knit polyester	Yes			Yes		Knife-cut	140	ISO 5-8	A-D	455	5.69	3.15
Polynit	100% no-run interlock knit polyester	Yes					Knife-cut	140	ISO 5-8	C-D	357	6.90	0.53
Anticon Gold StandardWeight	100% interlock knit polyester	Yes					Sealed	120	ISO 3-8	A-D	350	5.20	0.14
Polywipe-C Heatseal	100% interlock knit polyester	Yes			Yes		Sealed	120	ISO 3-8	C-D	289	3.08	0.14
PROSAT Polywipe-C Heatseal	100% interlock knit polyester		Yes		Yes		Sealed	120	ISO 3-8	A-D	N/A	2.22	0.14
ReFIBE StandardWeight Heatseal	100% interlock knit recycled polyester	Yes			Yes		Sealed	124	ISO 3-8	A-D	275	2.72	0.15
Anticon 100 StandardWeight	100% interlock knit polyester	Yes					Knife-cut	120	ISO 5-8	C-D	339	3.97	1.56
Polywipe-C	100% interlock knit polyester	Yes					Knife-cut	120	ISO 5-8	C-D	265	4.01	1.26

MICROFIBER

Anticon MicroQuilt	2-ply microfiber polyester interlock knit	Yes			Yes		Sealed	230	ISO 3-8	A-D	850	5.7	0.45
Anticon Gold Sorb	100% polyester, blend of standard and microfibers	Yes			Yes		Sealed	148	ISO 3-8	A-D	500	5.0	0.16
MicroSilk II	75/25% blend of microfiber polyester/nylon	Yes					Sealed	235	ISO 5-8	C-D	367	36.3	0.48

SPECIALITY

Polynit Z	ESD polyester	Yes					Sealed	140	ISO 3-8	N/A	303	2.2	1.45
StatZorb	ESD polyester	Yes					Sealed	135	ISO 3-8	N/A	215	33.6	5.70

NOTES (knitted and nonwoven wipes comparison)
CNC - Controlled not classified environments.
All test work is carried out on the dry substrate to the requirements of IEST-PP-CC004.2 or CC004.3.
Data shown are nominal typical values and should not be used as the product specifications.
Valid product comparisons may only be obtained through side-by-side testing in the same test facility, using the same test methods and test equipment.

Contec® Nonwoven Wipe Comparison Guide

Brand	Substrate	Dry	Presat Pouch	Presat Canister	Sterile Option	Low Endotoxin	Weight g/m²	Area of Use	Area of Use (GMP)	Extrinsic sorbency ml/m²	Particles ≥ 0.5 µm x 10⁶/m²	Fibers > 100 µm x 10³/m²
Amplitude Kappa	Lyocell/polyester	Yes			Yes	Yes	61	ISO 5-8	A - D	395	16.3	22.0
Amplitude Delta	100% nonwoven polyester	Yes					71	ISO 5-8	C - D	305	7.9	2.00
PROSAT Delta	100% nonwoven polyester		Yes		Yes		67	ISO 5-8	A - D	N/A	39.3	10.4
SATWIPES Delta	100% nonwoven polyester			Yes			69	ISO 6-8	C - D	N/A	16.5	1.0
Amplitude Helix	Meltblown polypropylene	Yes					68	ISO 5-8	C - D	250	25.5	0.07
PROSAT MBPP	Meltblown polypropylene		Yes		Yes	Yes	36	ISO 5-8	A - D	N/A	5.8	6.3
Amplitude Sigma/ SterileSorb	Cellulose/polyester blend	Yes			Yes		68	ISO 5-8	A - D	314	32.7	22.0
PROSAT Sigma	Cellulose/polyester blend		Yes		Yes		70	ISO 5-8	A - D	N/A	21.5	37.7
SATWIPES Sigma	Cellulose/polyester blend			Yes			68	ISO 6-8	C - D	N/A	17.1	14.8
Amplitude Epsilon	Cellulose/polyester blend (blue)	Yes					71	ISO 5-8	C - D	291	25.2	25.0
Amplitude EcoCloth	Cellulose/polyester blend (extra loft)	Yes					56	ISO 5-8	C - D	356	30.0	29.0
Amplitude Prozorb	Cellulose/polyester blend (textured)	Yes					55	ISO 5-8	C - D	367	29.7	11.0
Amplitude Theta	Cellulose/polyester blend (lightweight)	Yes					51	ISO 5-8	C - D	249	32.0	22.0
PROSAT Theta	Cellulose/polyester blend (lightweight)		Yes		Yes		53	ISO 5-8	A - D	N/A	18.6	21.7
SATWIPES Theta	Cellulose/polyester blend (lightweight)			Yes	Yes		53	ISO 5-8	A - D	N/A	18.6	21.7
Amplitude Zeta	5-ply polypropylene and cellulose laminate	Yes					85	ISO 6-8	C - D	435	115	12.0
TuffStuff Heavy Duty	Cellulose/polyester blend	Yes					65	ISO 6-8	C - D	329	N/A	N/A
TuffStuff Medium Duty	Cellulose/polyester blend	Yes					56	ISO 6-8	CNC	288	N/A	N/A
Twill Jean	Woven cotton	Yes					190	ISO 7-8	CNC	300	80.0	98
Amplitude Optic	Abaca cellulose	Yes					17	ISO 6-8	C - D	79	42.4	0.52
SATWIPES Polyester/ Rayon	50% Polyester/50% rayon blend			Yes			36	ISO 7-8	C - D	N/A	58.2	16.8
MICROFIBER												
MicroGenesis	100% microfiber polyester into polypropylene substrate	Yes					120	ISO 6-8	C - D	658	6.8	2.39
PROSAT Pi	Polyester and nylon split microfiber		Yes		Yes		80	ISO 5-8	A - D	N/A	11.20	11.96



Contec® cleaning and disinfecting products are available throughout the world. Sales representatives are conveniently located across Europe, Asia and North and South America. Please visit www.contecinc.com to find a sales representative in your area and to learn more about our products for critical environments.

Presaturated Wipes
Mopping Systems
Disinfectants

Spill Control Products
Knitted Wipes
Sterile Products

Sponges
Nonwoven Wipes
Swabs

Contec, Inc.

525 Locust Grove
Spartanburg, SC 29303 USA
Tel: +1 (864) 503-8333
Fax: +1 (864) 503-8444
Toll Free US, Canada, PR: 1-800-289-5762

Contec Europe

ZI du Prat - RP 3707
56037 VANNES Cedex
FRANCE
Tel: +33(0) 2 97 43 76 90

**Contec Cleanroom Technology
(Suzhou) Co. Ltd.**

17 Longyun Road
Suzhou Industrial park
Suzhou 215026
China
Tel: +86-512-6274 4050
Fax: +86-512-6274 4051

